

EMX2 Antibody

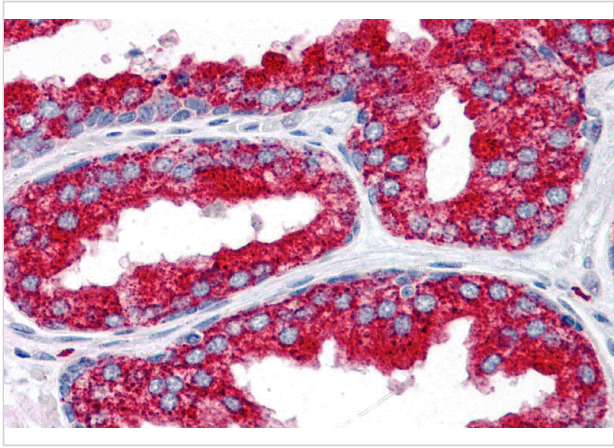
CATALOG NUMBER: 4099

Specifications

| | |
|----------------------------|---|
| Host Species | Rabbit |
| Species Reactivity | Human |
| Homology | Predicted species reactivity based on immunogen sequence: Mouse: (94%), Bovine: (94%) |
| Immunogen | EMX2 antibody was raised against an 16 amino acid synthetic peptide near the amino terminus of human EMX2. The immunogen is located within the first 50 amino acids of EMX2. |
| Conjugate | Unconjugated |
| Tested Applications | ELISA, IHC-P |
| User Note | Optimal dilutions for each application to be determined by the researcher. |
| Specificity | At least two isoforms of EMX2 are known to exist; this antibody will detect both isoforms. EMX2 antibody is predicted to not cross-react with EMX1. |
| Predicted Molecular Weight | 28 kDa |

Properties

| | |
|--------------------|--|
| Purification | EMX2 Antibody is affinity chromatography purified via peptide column. |
| Clonality | Polyclonal |
| Isotype | IgG |
| Physical State | Liquid |
| Buffer | EMX2 Antibody is supplied in PBS containing 0.02% sodium azide. |
| Concentration | 1 mg/mL |
| Storage Conditions | EMX2 antibody can be stored at 4°C for three months and -20°C, stable for up to one year. As with all antibodies care should be taken to avoid repeated freeze thaw cycles. Antibodies should not be exposed to prolonged high temperatures. |



EMX2 Antibody 1

Immunohistochemistry of EMX2 in human prostate tissue with EMX2 antibody at 5 µg/mL.

Disclaimer

| | |
|------------|--|
| Disclaimer | Optimal dilutions/concentrations should be determined by the end user. The information provided is a guideline for product use. This product is for research use only. |
|------------|--|

For research use only. For additional information, visit ProSci's [Terms and Conditions Page](#).