

## PD-1 Antibody

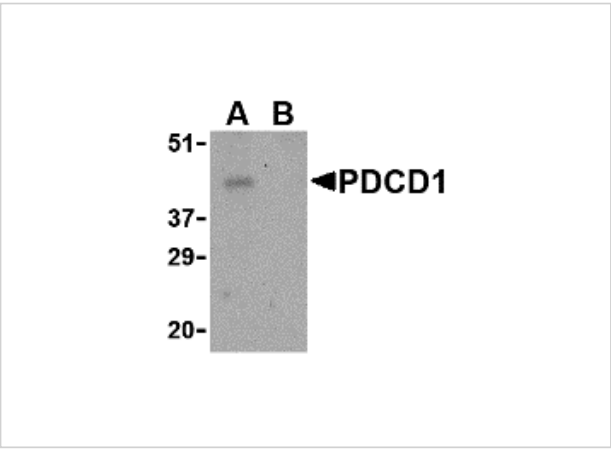
CATALOG NUMBER: 4067

### Specifications

Host Species	Rabbit
Species Reactivity	Human, Mouse, Rat
Immunogen	PD-1 antibody was raised against a 16 amino acid synthetic peptide from near the center of human PD-1. The immunogen is located within amino acids 120 - 170 of PD-1.
Conjugate	Unconjugated
Tested Applications	ELISA, ICC, IF, IHC-P, WB
User Note	Optimal dilutions for each application to be determined by the researcher.
Predicted Molecular Weight	Predicted: 32 kDa Observed: 43 kDa

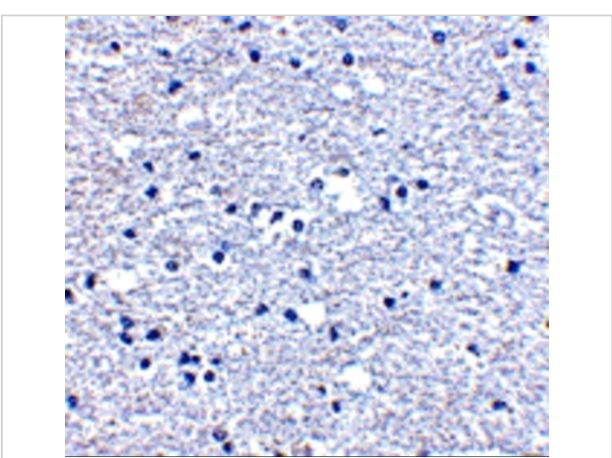
### Properties

Purification	PD-1 Antibody is affinity chromatography purified via peptide column.
Clonality	Polyclonal
Isotype	IgG
Physical State	Liquid
Buffer	PD-1 Antibody is supplied in PBS containing 0.02% sodium azide.
Concentration	1 mg/mL
Storage Conditions	PD-1 antibody can be stored at 4°C for three months and -20°C, stable for up to one year. As with all antibodies care should be taken to avoid repeated freeze thaw cycles. Antibodies should not be exposed to prolonged high temperatures.



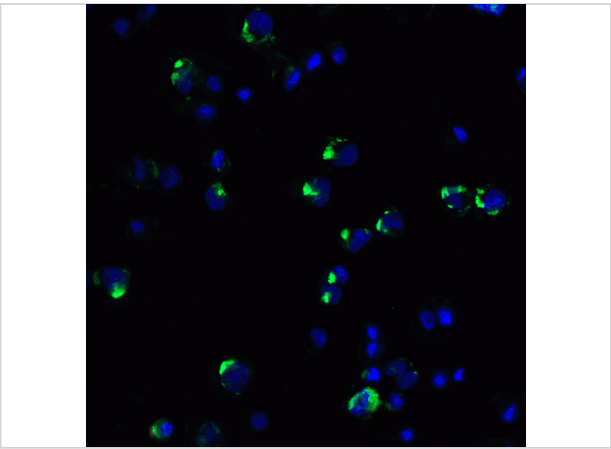
PD-1 Antibody 1

Western blot analysis of PD-1 in THP-1 cell lysate with PD-1 antibody at 1 µg/mL in the (A) absence and (B) presence of blocking peptide.



PD-1 Antibody 2

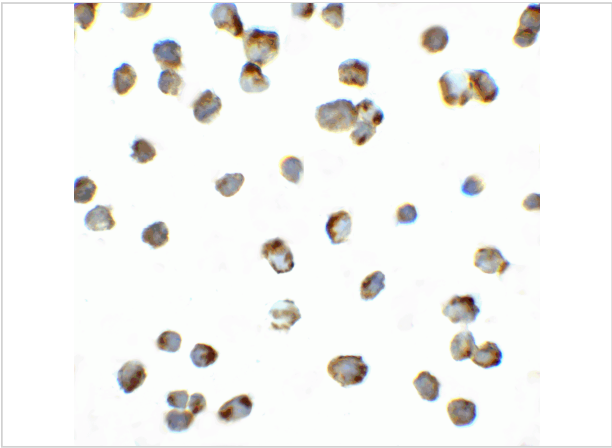
Immunohistochemistry of PD-1 in human brain tissue with PD-1 antibody at 5 µg/mL.



PD-1 Antibody 3

Immunofluorescence of PD-1 in PD-1-transfected HEK293 cells with PD-1 antibody at 20 µg/mL.

Green: PD-1 Antibody (4067)  
Blue: DAPI staining



PD-1 Antibody 4

Immunocytochemistry of PD-1 in PD-1-transfected HEK293 cells with PD-1 antibody at 10 µg/mL.

Disclaimer

Disclaimer	Optimal dilutions/concentrations should be determined by the end user. The information provided is a guideline for product use. This product is for research use only.
------------	--

For research use only. For additional information, visit ProSci's [Terms and Conditions Page](#).