

PD-L1 Antibody

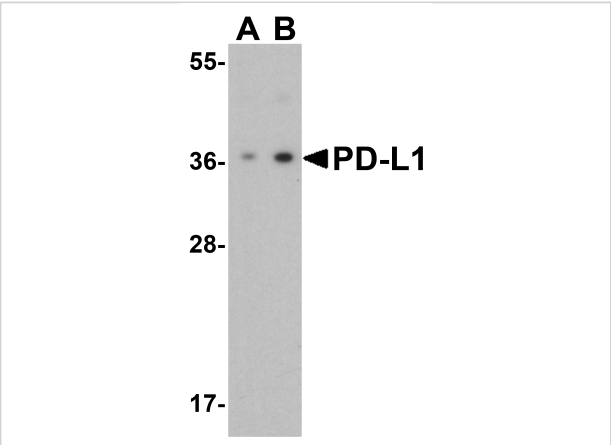
CATALOG NUMBER: 4059

Specifications

Host Species	Rabbit
Species Reactivity	Human, Mouse, Rat
Homology	Predicted species reactivity based on immunogen sequence: Rat: (77%), Mouse: (71%)
Immunogen	Anti-PD-L1 antibody (4059) was raised against a peptide corresponding to 17 amino acids near the center of human PD-L1 isoform 1. The immunogen is located within amino acids 60 - 110 of PD-L1.
Conjugate	Unconjugated
Tested Applications	ELISA, Flow, IF, IHC-P, WB
User Note	Optimal dilutions for each application to be determined by the researcher.
Specificity	PD-L1 antibody has no cross-reactivity to PD-L2.
Predicted Molecular Weight	Predicted: 33 kDa Observed: 37 kDa

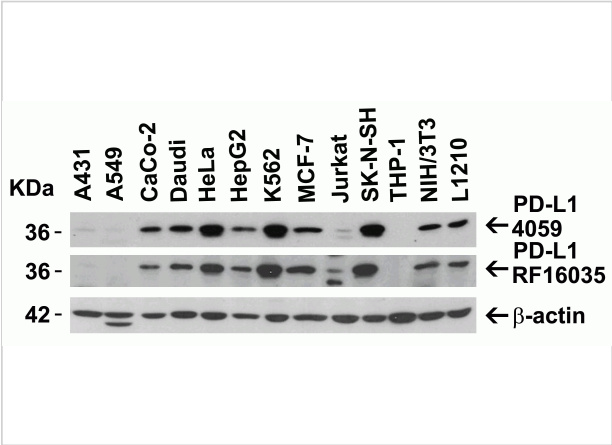
Properties

Purification	PD-L1 Antibody is affinity chromatography purified via peptide column.
Clonality	Polyclonal
Isotype	IgG
Physical State	Liquid
Buffer	PD-L1 Antibody is supplied in PBS containing 0.02% sodium azide.
Concentration	1 mg/mL
Storage Conditions	PD-L1 antibody can be stored at 4°C for three months and -20°C, stable for up to one year. As with all antibodies care should be taken to avoid repeated freeze thaw cycles. Antibodies should not be exposed to prolonged high temperatures.



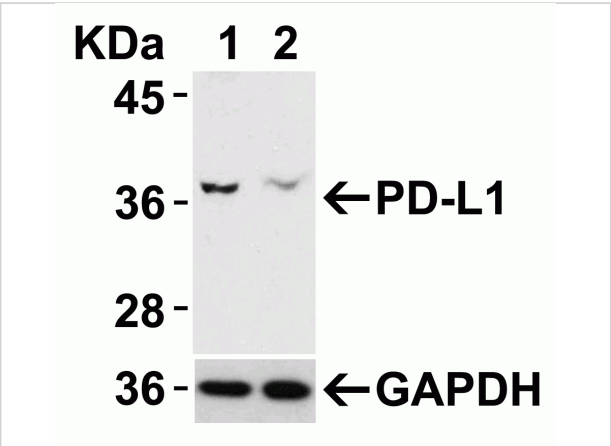
PD-L1 Antibody 1

Figure 1 Western Blot Validation of PD-L1 in HeLa Cells
 Loading: 15 µg of lysates per lane. Antibodies: 4059 (A: 1 µg/mL, B: 2 µg/mL), 1 h incubation at RT in 5% NFDm/TBST. Second...



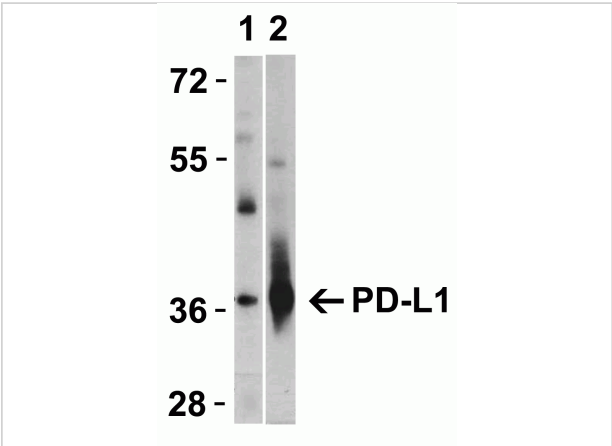
PD-L1 Antibody 2

Figure 2 Independent Antibody Validation (IAV) via Protein Expression Profile in Human and Mouse cell lines
 Loading: 15 µg of lysates per lane. Antibodies: 4059 (2 µg/mL), RF1603...



PD-L1 Antibody 3

Figure 3 Validation with PD-L1 siRNA Knockdown in HeLa Cells
 HeLa cells were transfected with control siRNAs (lane 1) or PD-L1 siRNAs (lane 2) Loading: 10 µg of HeLa whole cell...



PD-L1 Antibody 4

Figure 4 Validation with PD-L1 overexpression in 293 cells
 Loading: Lysates/proteins at 15 µg per lane. Lane 1: non-transfected 293 cells Lane 2: PD-L1 overexpressed 293 cel...

Disclaimer

Disclaimer	Optimal dilutions/concentrations should be determined by the end user. The information provided is a guideline for product use. This product is for research use only.
------------	--

For research use only. For additional information, visit ProSci's [Terms and Conditions Page](#).