

BANF1 Antibody

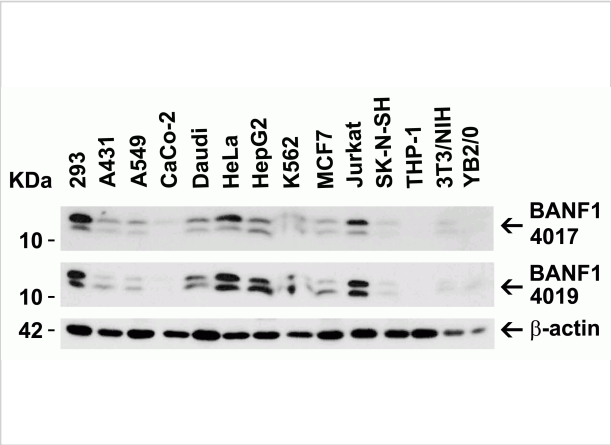
CATALOG NUMBER: 4017

Specifications

Host Species	Rabbit
Species Reactivity	Human
Homology	Predicted species reactivity based on immunogen sequence: Mouse: (100%), Rat: (100%)
Immunogen	Anti-BANF1 antibody (4017) was raised against a peptide corresponding to 15 amino acids near the carboxy terminus of human BANF1. The immunogen is located within the last 50 amino acids of BANF1.
Conjugate	Unconjugated
Tested Applications	ELISA, IF, WB
User Note	Optimal dilutions for each application to be determined by the researcher.
Predicted Molecular Weight	Predicted: 10kD Observed: 12 kD Despite its predicted molecular weight, BANF1 often migrates at a higher size in SDS-PAGE.

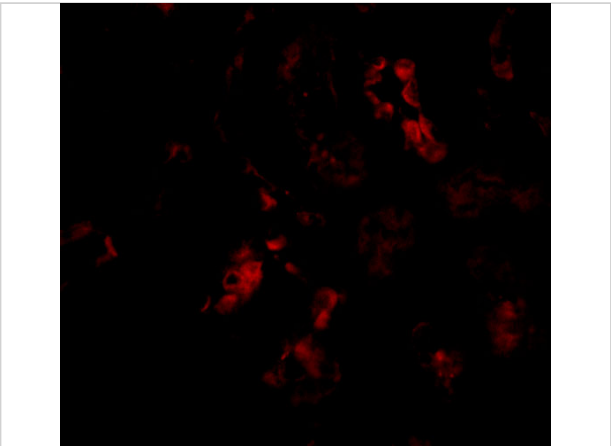
Properties

Purification	BANF1 Antibody is affinity chromatography purified via peptide column.
Clonality	Polyclonal
Isotype	IgG
Physical State	Liquid
Buffer	BANF1 Antibody is supplied in PBS containing 0.02% sodium azide.
Concentration	1 mg/mL
Storage Conditions	BANF1 antibody can be stored at 4°C for three months and -20°C, stable for up to one year. As with all antibodies care should be taken to avoid repeated freeze thaw cycles. Antibodies should not be exposed to prolonged high temperatures.



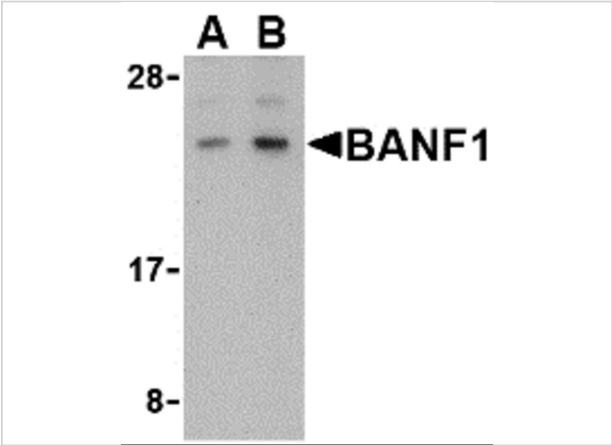
BANF1 Antibody 1

Figure 1 Independent Antibody Validation (IAV) via Protein Expression Profile in Human, Mouse and Rat Cell Lines
Loading: 15 µg of lysates per lane. Antibodies: BANF1 4017 (2 µg/...



BANF1 Antibody 3

Figure 2 Western Blot Validation in Human Kidney Tissue Lysate
Loading: 15 µg of lysates per lane. Antibodies: BANF1 4017 (A: 0.5 µg/mL and B: 1 µg/mL), 1h incubation at RT in 5%...



BANF1 Antibody 2

Figure 2 Western Blot Validation in Human Kidney Tissue Lysate
Loading: 15 µg of lysates per lane. Antibodies: BANF1 4017 (A: 0.5 µg/mL and B: 1 µg/mL), 1h incubation at RT in 5%...

Disclaimer

Disclaimer	Optimal dilutions/concentrations should be determined by the end user. The information provided is a guideline for product use. This product is for research use only.
------------	--

For research use only. For additional information, visit ProSci's [Terms and Conditions Page](#).