



ProSci Incorporated  
12170 Flint Place  
Poway, CA 92064, USA  
prosci-inc.com

P: +1 (888) 513-9525  
Local: +1 (858) 513-2638  
Fax: +1 (858) 513-2692

customercare@prosci-inc.com  
techsupport@prosci-inc.com

## ATR Antibody

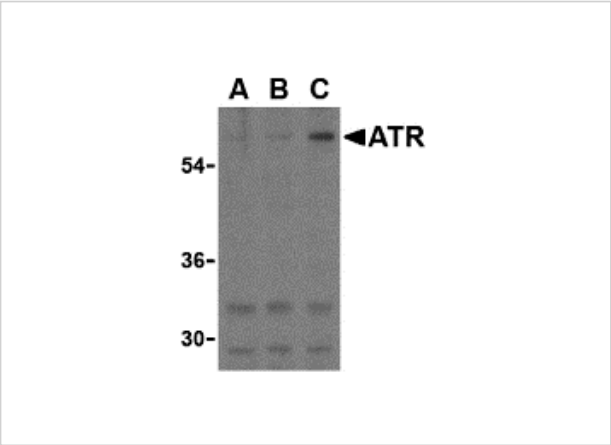
CATALOG NUMBER: 3119

## Specifications

Host Species	Rabbit
Species Reactivity	Human, Mouse, Rat
Immunogen	ATR antibody was raised against a peptide corresponding to 13 amino acids near the C-terminus of human ATR. The immunogen is located within the last 50 amino acids of ATR.
Conjugate	Unconjugated
Tested Applications	ELISA, ICC, IF, WB
User Note	Optimal dilutions for each application to be determined by the researcher.
Specificity	ATR antibody will recognize only the largest isoform.

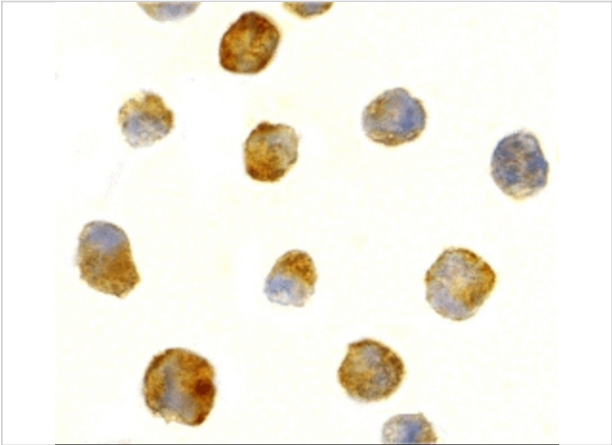
## Properties

Purification	ATR Antibody is Ion exchange chromatography purified.
Clonality	Polyclonal
Isotype	IgG
Physical State	Liquid
Buffer	ATR Antibody is supplied in PBS containing 0.02% sodium azide.
Concentration	1 mg/mL
Storage Conditions	ATR antibody can be stored at 4°C for three months and -20°C, stable for up to one year. As with all antibodies care should be taken to avoid repeated freeze thaw cycles. Antibodies should not be exposed to prolonged high temperatures.



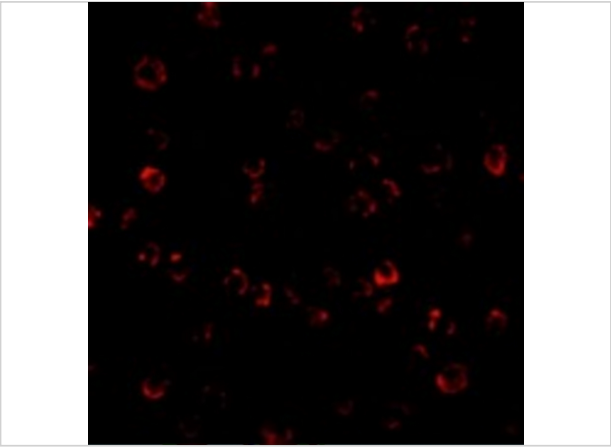
ATR Antibody 1

Western blot analysis of ATR in K562 cell lysates with ATR antibody at (A) 0.5, (B) 1, and (C) 2  $\mu\text{g/mL}$ .



ATR Antibody 2

Immunocytochemistry of ATR in K562 cells with ATR antibody at 2  $\mu\text{g/mL}$ .



ATR Antibody 3

Immunofluorescence of ATR in K562 cells with ATR antibody at 10  $\mu\text{g/mL}$ .

Disclaimer

Disclaimer	Optimal dilutions/concentrations should be determined by the end user. The information provided is a guideline for product use. This product is for research use only.
------------	--

For research use only. For additional information, visit ProSci's [Terms and Conditions Page](#).