

TRBP1 Antibody

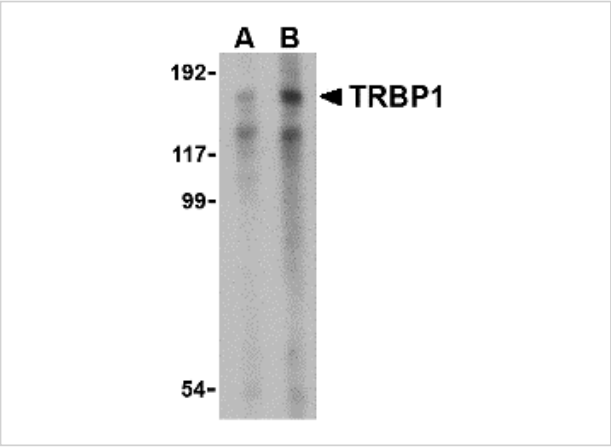
CATALOG NUMBER: 4011

Specifications

Host Species	Rabbit
Species Reactivity	Human, Mouse
Immunogen	TRBP1 antibody was raised against a 17 amino acid synthetic peptide from near the center of human TRBP1. The immunogen is located within amino acids 1310 - 1360 of TRBP1.
Conjugate	Unconjugated
Tested Applications	ELISA, WB
User Note	Optimal dilutions for each application to be determined by the researcher.

Properties

Purification	TRBP1 Antibody is affinity chromatography purified via peptide column.
Clonality	Polyclonal
Isotype	IgG
Physical State	Liquid
Buffer	TRBP1 Antibody is supplied in PBS containing 0.02% sodium azide.
Concentration	1 mg/mL
Storage Conditions	TRBP1 antibody can be stored at 4°C for three months and -20°C, stable for up to one year. As with all antibodies care should be taken to avoid repeated freeze thaw cycles. Antibodies should not be exposed to prolonged high temperatures.



TRBP1 Antibody 1

Western blot analysis of TRBP1 in 3T3 cell lysate with TRBP1 antibody at (A) 1 and (B) 2 µg/mL.

Disclaimer

Disclaimer	Optimal dilutions/concentrations should be determined by the end user. The information provided is a guideline for product use. This product is for research use only.
------------	--

For research use only. For additional information, visit ProSci's [Terms and Conditions Page](#).