

## TMP21 Antibody

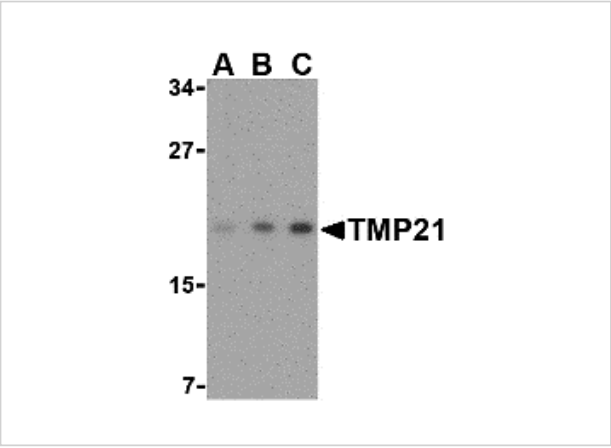
CATALOG NUMBER: 3999

### Specifications

Host Species	Rabbit
Species Reactivity	Human, Mouse, Rat
Homology	Predicted species reactivity based on immunogen sequence: Bovine: (100%), Rabbit: (94%)
Immunogen	TMP21 antibody was raised against a 18 amino acid synthetic peptide from near the center of human TMP21. The immunogen is located within amino acids 70 - 120 of TMP21.
Conjugate	Unconjugated
Tested Applications	ELISA, IHC-P, WB
User Note	Optimal dilutions for each application to be determined by the researcher.

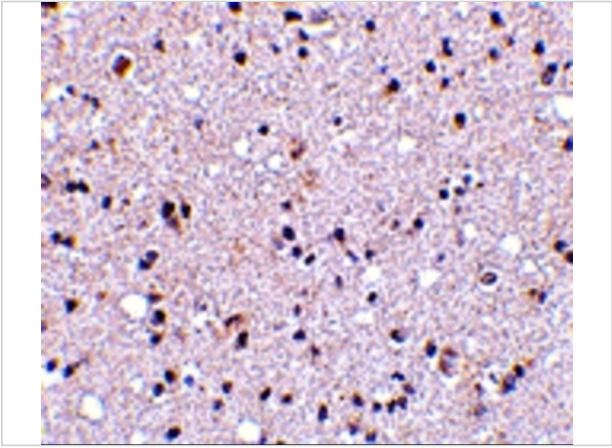
### Properties

Purification	TMP21 Antibody is affinity chromatography purified via peptide column.
Clonality	Polyclonal
Isotype	IgG
Physical State	Liquid
Buffer	TMP21 Antibody is supplied in PBS containing 0.02% sodium azide.
Concentration	1 mg/mL
Storage Conditions	TMP21 antibody can be stored at 4°C for three months and -20°C, stable for up to one year. As with all antibodies care should be taken to avoid repeated freeze thaw cycles. Antibodies should not be exposed to prolonged high temperatures.



**TMP21 Antibody 1**

Western blot analysis of TMP21 in mouse brain tissue lysate with TMP21 antibody at (A) 0.5, (B) 1 and (C) 2 µg/mL.



**TMP21 Antibody 2**

Immunohistochemistry of TMP21 in human brain tissue with TMP21 antibody at 5 µg/mL.

**Disclaimer**

<b>Disclaimer</b>	Optimal dilutions/concentrations should be determined by the end user. The information provided is a guideline for product use. This product is for research use only.
-------------------	--

For research use only. For additional information, visit ProSci's [Terms and Conditions Page](#).