

Blimp-1 Antibody

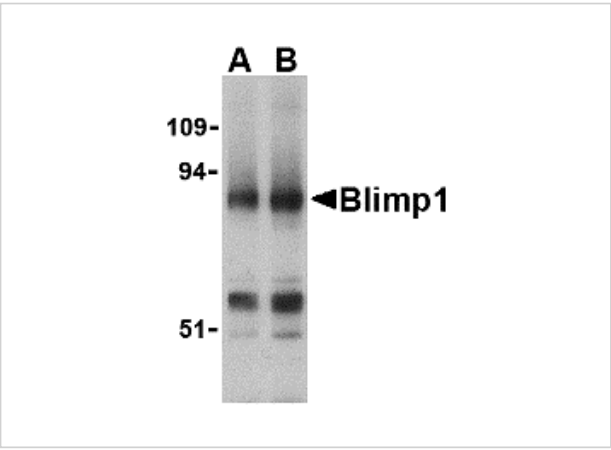
CATALOG NUMBER: 3991

Specifications

Host Species	Rabbit
Species Reactivity	Human, Mouse, Rat
Immunogen	Blimp-1 antibody was raised against a 17 amino acid synthetic peptide from near the amino terminus of human Blimp-1. The immunogen is located within amino acids 100 - 150 of Blimp-1.
Conjugate	Unconjugated
Tested Applications	ELISA, IHC-P, WB
User Note	Optimal dilutions for each application to be determined by the researcher.

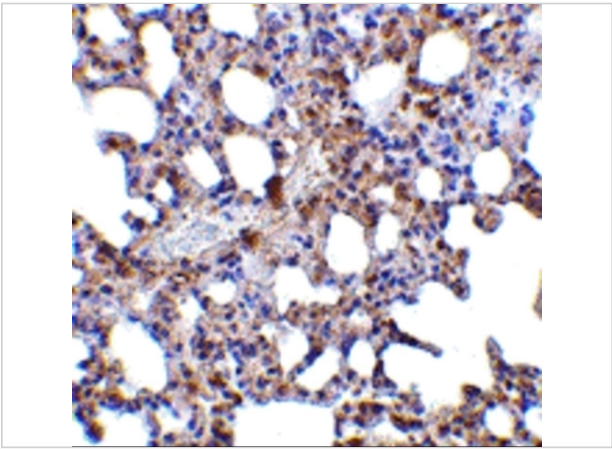
Properties

Purification	Blimp-1 Antibody is affinity chromatography purified via peptide column.
Clonality	Polyclonal
Isotype	IgG
Physical State	Liquid
Buffer	Blimp-1 Antibody is supplied in PBS containing 0.02% sodium azide.
Concentration	1 mg/mL
Storage Conditions	Blimp-1 antibody can be stored at 4°C for three months and -20°C, stable for up to one year. As with all antibodies care should be taken to avoid repeated freeze thaw cycles. Antibodies should not be exposed to prolonged high temperatures.



Blimp-1 Antibody 1

Western blot analysis of Blimp-1 in mouse lung tissue lysate with Blimp-1 antibody at (A) 0.5 and (B) 1µg/mL.



Blimp-1 Antibody 2

Immunohistochemistry of Blimp-1 in mouse lung tissue with Blimp-1 antibody at 5 µg/mL.

Disclaimer

Disclaimer	Optimal dilutions/concentrations should be determined by the end user. The information provided is a guideline for product use. This product is for research use only.
------------	--

For research use only. For additional information, visit ProSci's [Terms and Conditions Page](#).