

LKB1 Antibody

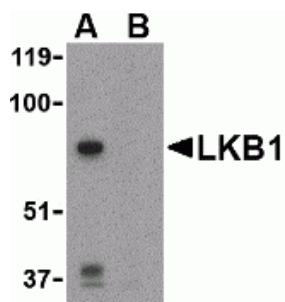
CATALOG NUMBER: 3987

Specifications

Host Species	Rabbit
Species Reactivity	Human, Mouse
Homology	Predicted species reactivity based on immunogen sequence: Rat: (100%), Chicken: (87%)
Immunogen	LKB1 antibody was raised against a 15 amino acid synthetic peptide from near the carboxy terminus of human LKB1. The immunogen is located within amino acids 310 - 360 of LKB1.
Conjugate	Unconjugated
Tested Applications	ELISA, WB
User Note	Optimal dilutions for each application to be determined by the researcher.

Properties

Purification	LKB1 Antibody is affinity chromatography purified via peptide column.
Clonality	Polyclonal
Isotype	IgG
Physical State	Liquid
Buffer	LKB1 Antibody is supplied in PBS containing 0.02% sodium azide.
Concentration	1 mg/mL
Storage Conditions	LKB1 antibody can be stored at 4°C for three months and -20°C, stable for up to one year. As with all antibodies care should be taken to avoid repeated freeze thaw cycles. Antibodies should not be exposed to prolonged high temperatures.



LKB1 Antibody 1

Western blot analysis of LKB1 in PC-3 cell lysate with LKB1 antibody at 1 µg/mL in the (A) absence or (B) presence of blocking peptide.

Disclaimer

Disclaimer

Optimal dilutions/concentrations should be determined by the end user. The information provided is a guideline for product use. This product is for research use only.

For research use only. For additional information, visit ProSci's [Terms and Conditions Page](#).