

PAK5 Antibody

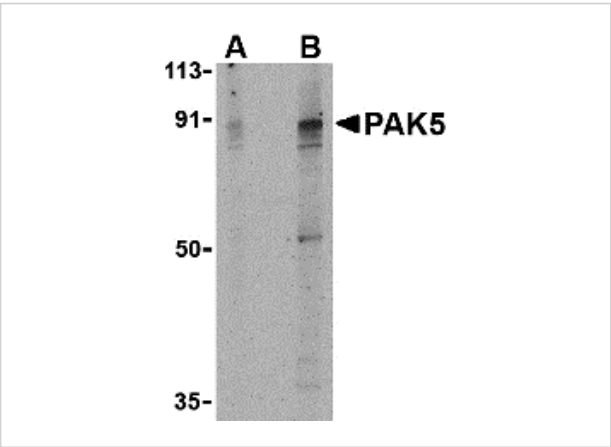
CATALOG NUMBER: 3075

Specifications

Host Species	Rabbit
Species Reactivity	Human
Homology	Predicted species reactivity based on immunogen sequence: Mouse: (100%), Rat: (92%)
Immunogen	PAK5 antibody was raised against a 13 amino acid synthetic peptide from near the center of human PAK5. The immunogen is located within amino acids 240 - 290 of PAK5.
Conjugate	Unconjugated
Tested Applications	ELISA, ICC, IF, WB
User Note	Optimal dilutions for each application to be determined by the researcher.

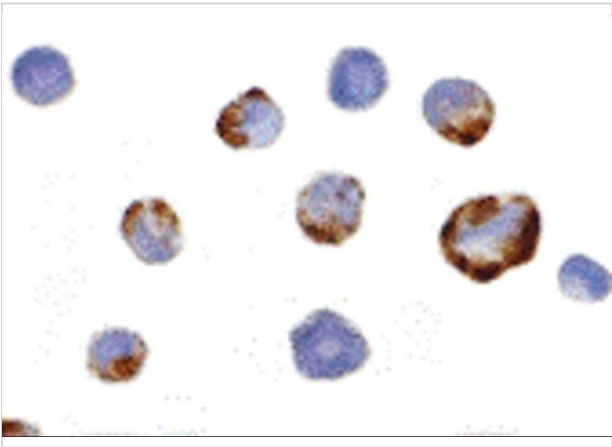
Properties

Purification	PAK5 Antibody is affinity chromatography purified via peptide column.
Clonality	Polyclonal
Isotype	IgG
Physical State	Liquid
Buffer	PAK5 Antibody is supplied in PBS containing 0.02% sodium azide.
Concentration	1 mg/mL
Storage Conditions	PAK5 antibody can be stored at 4°C for three months and -20°C, stable for up to one year. As with all antibodies care should be taken to avoid repeated freeze thaw cycles. Antibodies should not be exposed to prolonged high temperatures.



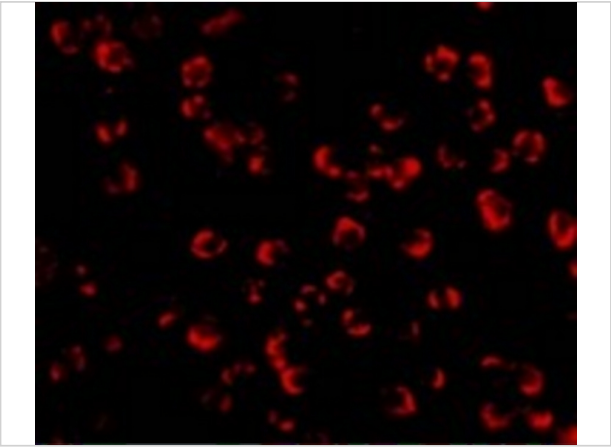
PAK5 Antibody 1

Western blot analysis of PAK5 in T24 lysate with PAK5 antibody at (A) 2 and (B) 4 µg/mL.



PAK5 Antibody 2

Immunocytochemistry of PAK5 in K562 cells with PAK5 antibody at 2 µg/mL.



PAK5 Antibody 3

Immunofluorescence of PAK5 in K562 cells with PAK5 antibody at 10 µg/mL.

Disclaimer

Disclaimer	Optimal dilutions/concentrations should be determined by the end user. The information provided is a guideline for product use. This product is for research use only.
------------	--

For research use only. For additional information, visit ProSci's [Terms and Conditions Page](#).