

## PAK2 Antibody

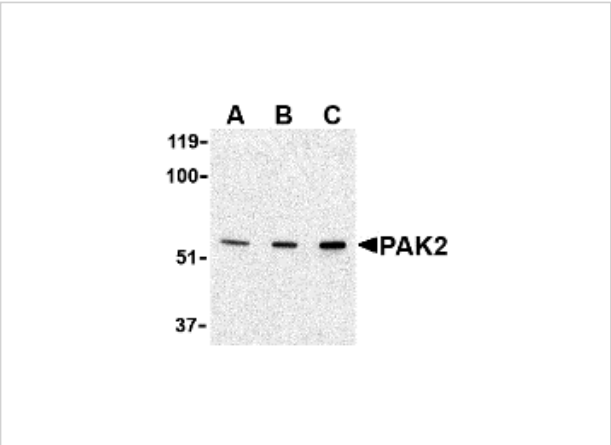
CATALOG NUMBER: 3887

### Specifications

Host Species	Rabbit
Species Reactivity	Human, Mouse, Rat
Homology	Predicted species reactivity based on immunogen sequence: Rabbit: (93%)
Immunogen	Anti-PAK2 antibody ( <b>3887</b> ) was raised against a peptide corresponding to 14 amino acids near the amino terminus of human PAK2. The immunogen is located within amino acids 20-70 of PAK2.
Conjugate	Unconjugated
Tested Applications	ELISA, IF, IHC-P, WB
User Note	Optimal dilutions for each application to be determined by the researcher.
Predicted Molecular Weight	Predicted: 58kD Observed: 58 kD

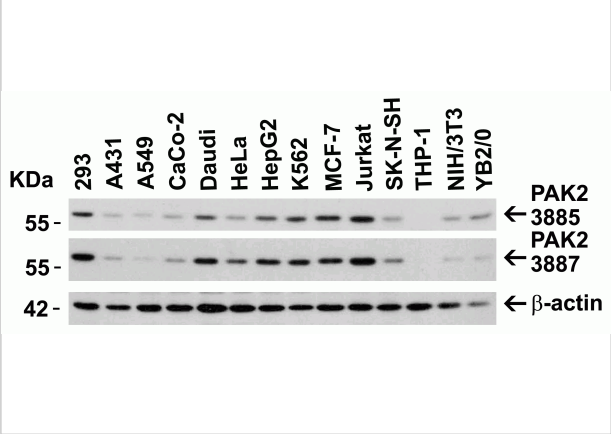
### Properties

Purification	PAK2 Antibody is affinity chromatography purified via peptide column.
Clonality	Polyclonal
Isotype	IgG
Physical State	Liquid
Buffer	PAK2 Antibody is supplied in PBS containing 0.02% sodium azide.
Concentration	1 mg/mL
Storage Conditions	PAK2 antibody can be stored at 4°C for three months and -20°C, stable for up to one year. As with all antibodies care should be taken to avoid repeated freeze thaw cycles. Antibodies should not be exposed to prolonged high temperatures.



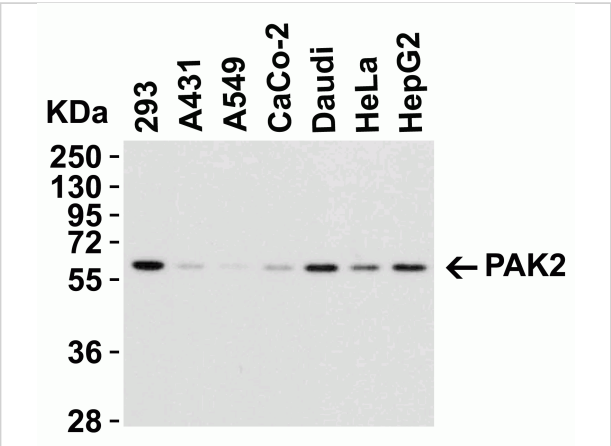
### PAK2 Antibody 1

**Figure 1 Western Blot Validation in Jurkat Lysate**  
 Loading: 15 µg of lysates per lane. Antibodies: PAK2 3887 (A: 0.5 µg/mL, B: 1 µg/mL and C: 2 µg/mL), 1h incubation at RT in 5% N...



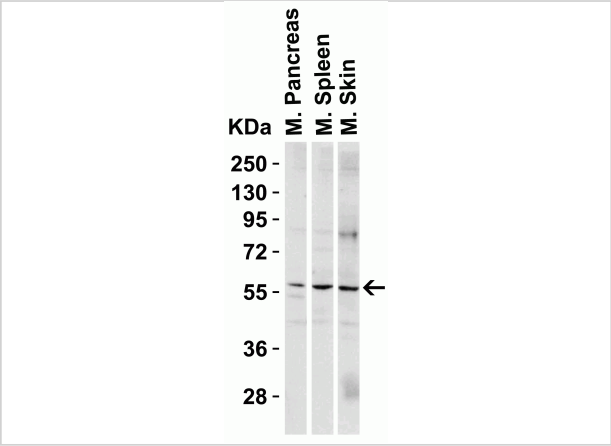
### PAK2 Antibody 2

**Figure 2 Independent Antibody Validation (IAV) via Protein Expression Profile in Cell Lines**  
 Loading: 15 µg of lysates per lane. Antibodies: PAK2 3885 (1 µg/mL), PAK2 3887 (1 µg...



### PAK2 Antibody 3

**Figure 3 Western Blot Validation in Human Cell Lines**  
 Loading: 15 µg of lysates per lane. Antibodies: PAK2 3887 (1 µg/mL), 1h incubation at RT in 5% NFDm/TBST. Secondary: Goat ant...



### PAK2 Antibody 4

**Figure 4 Western Blot Validation in Mouse Tissues**  
 Loading: 15 µg of lysates per lane. Antibodies: PAK2 3887 (1 µg/mL per lane), 1h incubation at RT in 5% NFDm/TBST. Secondary: Go...

## Disclaimer

Disclaimer	Optimal dilutions/concentrations should be determined by the end user. The information provided is a guideline for product use. This product is for research use only.
------------	--

For research use only. For additional information, visit ProSci's [Terms and Conditions Page](#).