

PAK2 Antibody

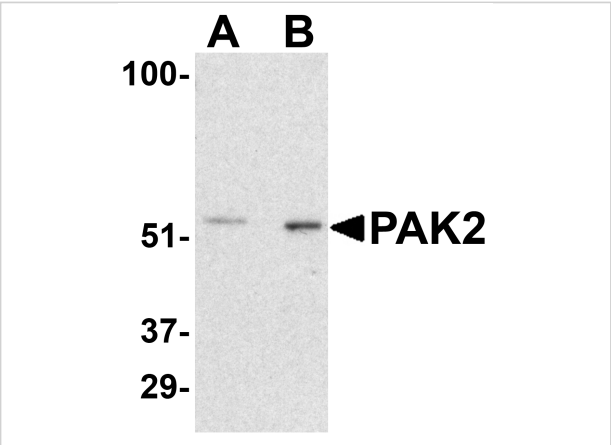
CATALOG NUMBER: 3885

Specifications

Host Species	Rabbit
Species Reactivity	Human, Mouse, Rat
Homology	Predicted species reactivity based on immunogen sequence: Rabbit: (100%)
Immunogen	Anti-PAK2 antibody (3885) was raised against a peptide corresponding to 14 amino acids near the carboxy terminus of human PAK2. The immunogen is located within amino acids 440-490 of PAK2.
Conjugate	Unconjugated
Tested Applications	ELISA, IF, IHC-P, WB
User Note	Optimal dilutions for each application to be determined by the researcher.
Predicted Molecular Weight	Predicted: 58kD Observed: 58 kD

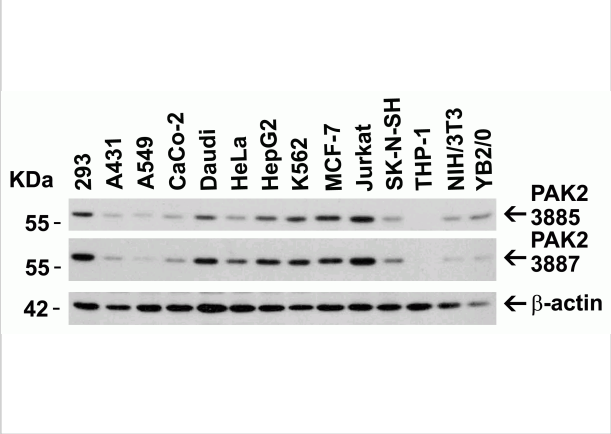
Properties

Purification	PAK2 Antibody is affinity chromatography purified via peptide column.
Clonality	Polyclonal
Isotype	IgG
Physical State	Liquid
Buffer	PAK2 Antibody is supplied in PBS containing 0.02% sodium azide.
Concentration	1 mg/mL
Storage Conditions	PAK2 antibody can be stored at 4°C for three months and -20°C, stable for up to one year. As with all antibodies care should be taken to avoid repeated freeze thaw cycles. Antibodies should not be exposed to prolonged high temperatures.



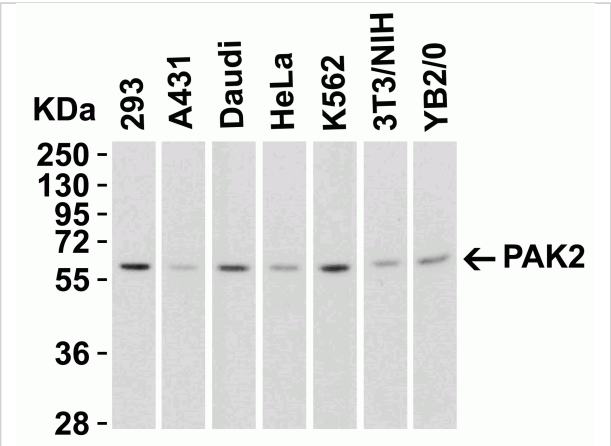
PAK2 Antibody 1

Figure 1 Western Blot Validation in Rat Bladder Tissue Lysate
 Loading: 15 µg of lysates per lane. Antibodies: PAK2 3885 (A: 0.5 µg/mL, B: 1 µg/mL), 1h incubation at RT in 5% NFD...



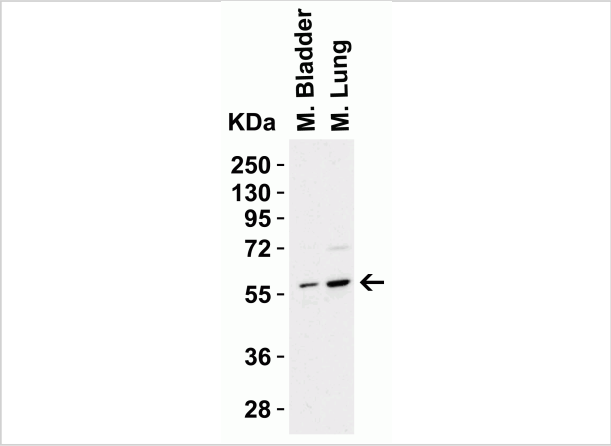
PAK2 Antibody 2

Figure 2 Independent Antibody Validation (IAV) via Protein Expression Profile in Cell Lines
 Loading: 15 µg of lysates per lane. Antibodies: PAK2 3885 (1 µg/mL), PAK2 3887 (1 µg/mL)...



PAK2 Antibody 3

Figure 3 Western Blot Validation in Human, Mouse and Rat Cell Lines
 Loading: 15 µg of lysates per lane. Antibodies: PAK2 3885 (1 µg/mL per lane), 1h incubation at RT in 5% NFDM/...



PAK2 Antibody 4

Figure 4 Western Blot Validation in Mouse Tissues
 Loading: 15 µg of lysates per lane. Antibodies: PAK2 3885 (1 µg/mL per lane), 1h incubation at RT in 5% NFDM/TBST. Secondary: Go...

Disclaimer

Disclaimer	Optimal dilutions/concentrations should be determined by the end user. The information provided is a guideline for product use. This product is for research use only.
-------------------	--

For research use only. For additional information, visit ProSci's [Terms and Conditions Page](#).