

Cyclin O Antibody

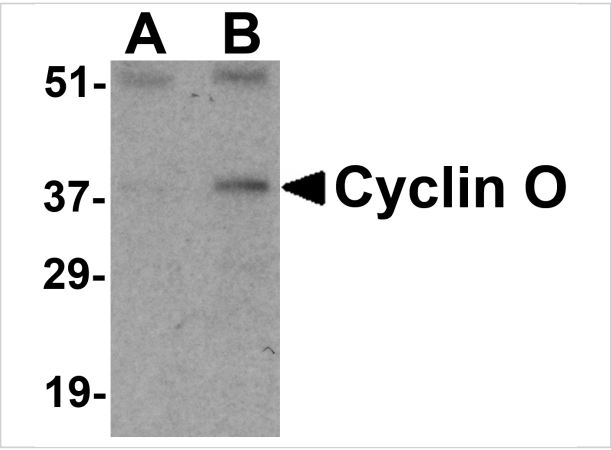
CATALOG NUMBER: 3859

Specifications

| | |
|----------------------------|---|
| Host Species | Rabbit |
| Species Reactivity | Human, Mouse, Rat |
| Immunogen | Cyclin O antibody was raised against a 14 amino acid synthetic peptide from near the amino terminus of human Cyclin O. The immunogen is located within the first 50 amino acids of Cyclin O. |
| Conjugate | Unconjugated |
| Tested Applications | ELISA, WB |
| User Note | Optimal dilutions for each application to be determined by the researcher. |
| Specificity | At least two isoforms of Cyclin O are known to exist; this antibody will recognize both isoforms. |
| Predicted Molecular Weight | 39 kDa |

Properties

| | |
|--------------------|--|
| Purification | Cyclin O Antibody is affinity chromatography purified via peptide column. |
| Clonality | Polyclonal |
| Isotype | IgG |
| Physical State | Liquid |
| Buffer | Cyclin O Antibody is supplied in PBS containing 0.02% sodium azide. |
| Concentration | 1 mg/mL |
| Storage Conditions | Cyclin O antibody can be stored at 4°C for three months and -20°C, stable for up to one year. As with all antibodies care should be taken to avoid repeated freeze thaw cycles. Antibodies should not be exposed to prolonged high temperatures. |



Cyclin O Antibody 1

Western blot analysis of Cyclin O in mouse bladder tissue lysate with Cyclin O antibody at (A) 1 and (B) 2 µg/mL.

Disclaimer

| | |
|------------|--|
| Disclaimer | Optimal dilutions/concentrations should be determined by the end user. The information provided is a guideline for product use. This product is for research use only. |
|------------|--|

For research use only. For additional information, visit ProSci's [Terms and Conditions Page](#).