

Pst1 Antibody

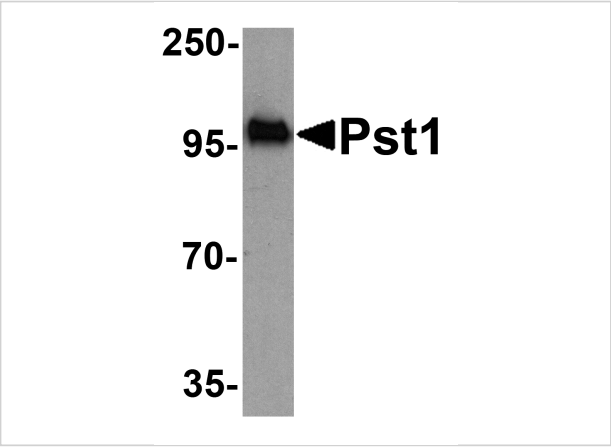
CATALOG NUMBER: 3825

Specifications

Host Species	Rabbit
Species Reactivity	Yeast
Homology	Predicted species reactivity based on immunogen sequence: Mouse: (79%), Rat: (79%), Human: (79%)
Immunogen	Pst1 antibody was raised against a synthetic peptide from the amino terminus of yeast Pst1. The immunogen is located within amino acids 80 - 130 of Pst1.
Conjugate	Unconjugated
Tested Applications	ELISA, WB
User Note	Optimal dilutions for each application to be determined by the researcher.
Predicted Molecular Weight	49 kDa

Properties

Purification	Pst1 Antibody is affinity chromatography purified via peptide column.
Clonality	Polyclonal
Isotype	IgG
Physical State	Liquid
Buffer	Pst1 Antibody is supplied in PBS containing 0.02% sodium azide.
Concentration	1 mg/mL
Storage Conditions	Pst1 antibody can be stored at 4°C for three months and -20°C, stable for up to one year. As with all antibodies care should be taken to avoid repeated freeze thaw cycles. Antibodies should not be exposed to prolonged high temperatures.



Pst1 Antibody 1

Western blot analysis of TM yeast Pst1 protein (50 ng) with Pst1 antibody at 1 µg/mL.

Disclaimer

Disclaimer	Optimal dilutions/concentrations should be determined by the end user. The information provided is a guideline for product use. This product is for research use only.
------------	--

For research use only. For additional information, visit ProSci's [Terms and Conditions Page](#).