

## AIM Antibody

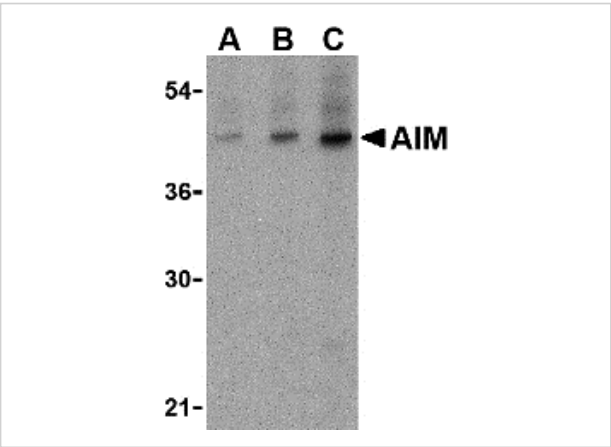
CATALOG NUMBER: 3807

### Specifications

Host Species	Rabbit
Species Reactivity	Human
Immunogen	AIM antibody was raised against a 16 amino acid synthetic peptide near the amino terminus of human AIM. The immunogen is located within amino acids 60 - 110 of AIM.
Conjugate	Unconjugated
Tested Applications	ELISA, IF, IHC-P, WB
User Note	Optimal dilutions for each application to be determined by the researcher.

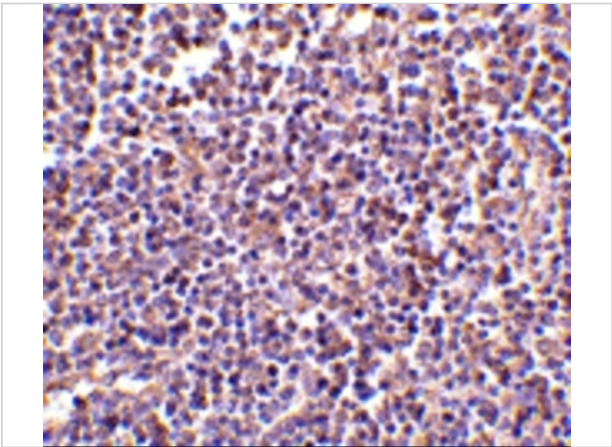
### Properties

Purification	AIM Antibody is affinity chromatography purified via peptide column.
Clonality	Polyclonal
Isotype	IgG
Physical State	Liquid
Buffer	AIM Antibody is supplied in PBS containing 0.02% sodium azide.
Concentration	1 mg/mL
Storage Conditions	AIM antibody can be stored at 4°C for three months and -20°C, stable for up to one year. As with all antibodies care should be taken to avoid repeated freeze thaw cycles. Antibodies should not be exposed to prolonged high temperatures.



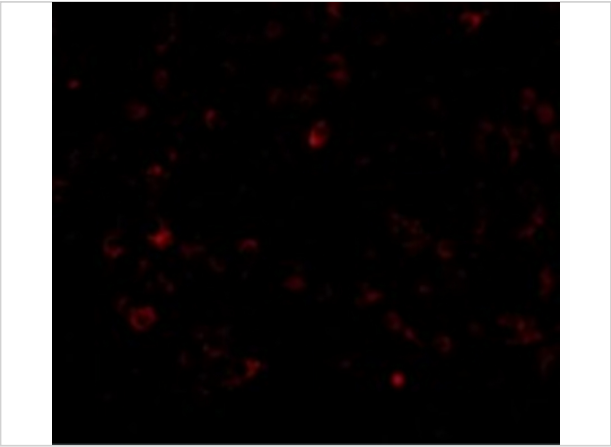
AIM Antibody 1

Western blot analysis of AIM in human lymph node tissue lysate with AIM antibody at (A) 1, (B) 2 and (C) 4  $\mu\text{g/mL}$ .



AIM Antibody 2

Immunohistochemistry of AIM in human lymph node tissue with AIM antibody at 2  $\mu\text{g/mL}$ .



AIM Antibody 3

Immunofluorescence of AIM in Human Lymph Node cells with AIM antibody at 20  $\mu\text{g/mL}$ .

Disclaimer

Disclaimer	Optimal dilutions/concentrations should be determined by the end user. The information provided is a guideline for product use. This product is for research use only.
------------	--

For research use only. For additional information, visit ProSci's [Terms and Conditions Page](#).