

IL-23 Antibody

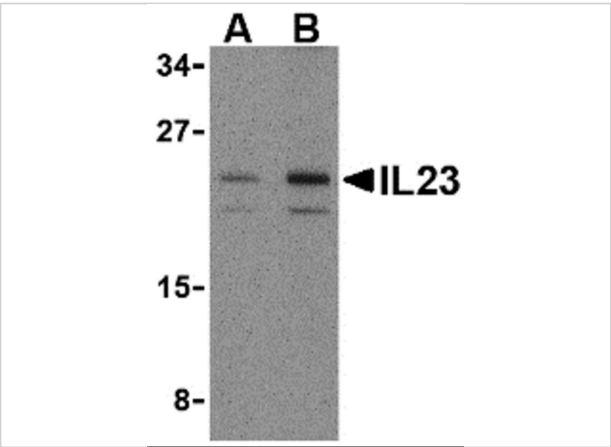
CATALOG NUMBER: 3795

Specifications

| | |
|----------------------------|---|
| Host Species | Rabbit |
| Species Reactivity | Human, Mouse |
| Homology | Predicted species reactivity based on immunogen sequence: Horse: (94%), Pig: (82%), Rat: (76%), Guinea pig: (76%) |
| Immunogen | Anti-IL-23 antibody (3795) was raised against a peptide corresponding to 17 amino acids near the amino terminus of human IL-23. The immunogen is located within amino acids 40 - 90 of IL-23. |
| Conjugate | Unconjugated |
| Tested Applications | ELISA, IF, IHC-P, WB |
| User Note | Optimal dilutions for each application to be determined by the researcher. |
| Predicted Molecular Weight | Predicted: 21kD Observed: 22 kD |

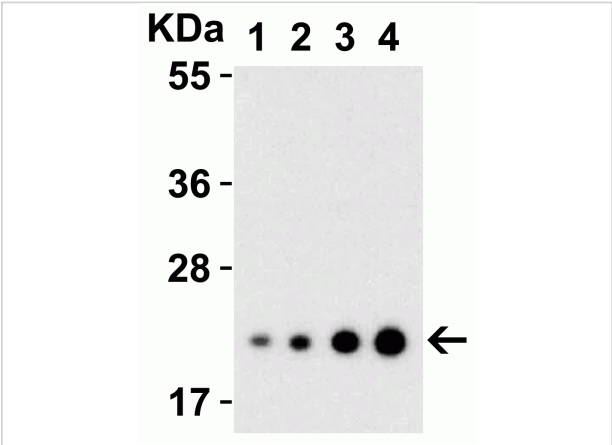
Properties

| | |
|--------------------|--|
| Purification | IL-23 Antibody is affinity chromatography purified via peptide column. |
| Clonality | Polyclonal |
| Isotype | IgG |
| Physical State | Liquid |
| Buffer | IL-23 Antibody is supplied in PBS containing 0.02% sodium azide. |
| Concentration | 1 mg/mL |
| Storage Conditions | IL-23 antibody can be stored at 4°C up to one year. Antibodies should not be exposed to prolonged high temperatures. |



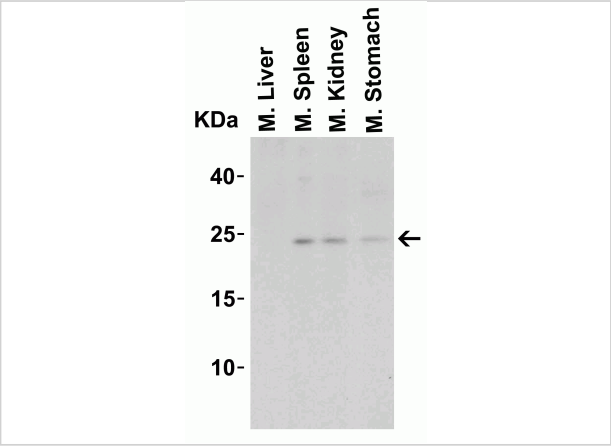
IL-23 Antibody 1

Figure 1 Western Blot Validation in Mouse Pancreas Tissue Lysate
 Loading: 15 µg of lysates per lane. Antibodies: IL-23 3795 (A: 1 µg/mL, B: 2 µg/mL), 1h incubation at RT in 5% NF...



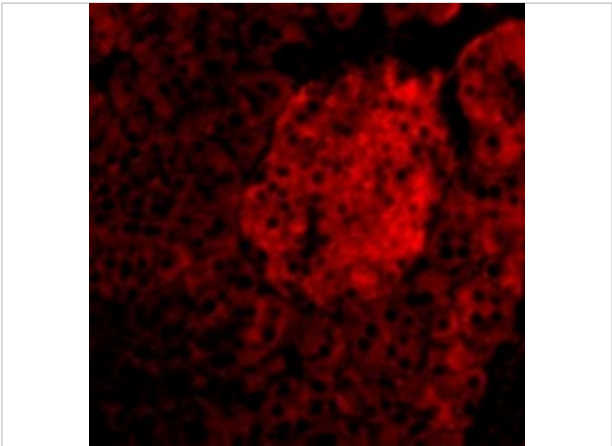
IL-23 Antibody 2

Figure 2 Western Blot Validation with Recombinant Protein
 Loading: 30 ng of human IL-23 recombinant protein per lane. Antibodies: IL-23 3795 (1: 0.25 µg/mL, 2: 0.5 µg/mL, 3: 1 µg...



IL-23 Antibody 3

Figure 3 Western Blot Validation in Mouse Tissue Lysate
 Loading: 15 µg of lysates per lane. Antibodies: IL-23 3795 (1 µg/mL), 1h incubation at RT in 5% NFDm/TBST. Secondary: Goat ...



IL-23 Antibody 4

Figure 4 Immunofluorescence Validation of IL-23 in Mouse Pancreas Tissue
 Immunofluorescent analysis of 4% paraformaldehyde-fixed mouse pancreas tissue labeling IL-23 with 3795 a...

Disclaimer

Disclaimer

Optimal dilutions/concentrations should be determined by the end user. The information provided is a guideline for product use. This product is for research use only.

For research use only. For additional information, visit ProSci's [Terms and Conditions Page](#).