



ProSci Incorporated  
12170 Flint Place  
Poway, CA 92064, USA  
prosci-inc.com

P: +1 (888) 513-9525  
Local: +1 (858) 513-2638  
Fax: +1 (858) 513-2692

customercare@prosci-inc.com  
techsupport@prosci-inc.com

## GAPDH Antibody (biotin)

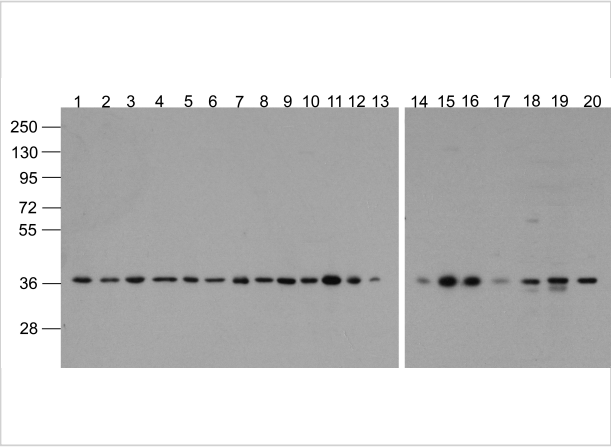
CATALOG NUMBER: 3781-biotin

### Specifications

Host Species	Rabbit
Species Reactivity	Chicken, Human, Mouse, Rabbit, Rat
Immunogen	Biotin-GAPDH antibody was raised against a synthetic peptide containing 16 amino acids near the carboxy terminus of GAPDH.
Conjugate	Biotin
Tested Applications	ELISA, WB
User Note	Optimal dilutions for each application to be determined by the researcher.
Specificity	Biotin-GAPDH antibody is human, mouse, rat, rabbit, and chicken reactive.
Predicted Molecular Weight	Predicted: 37 kDa Observed: 36 kDa

### Properties

Purification	Biotin-GAPDH antibody is affinity chromatography purified via peptide column.
Clonality	Polyclonal
Isotype	IgG
Physical State	Liquid
Buffer	Biotin-GAPDH antibody is supplied in PBS containing 1% BSA and 0.02% sodium azide.
Concentration	1 mg/mL
Storage Conditions	Biotin-GAPDH antibody can be stored at 4°C for three months and -20°C, stable for up to one year.



GAPDH Antibody (biotin) 1

Western blot analysis of GAPDH in 293, A431, A549, Daudi, HeLa, HepG2, Jurkat, K562, MOLT4, 3T3, Raji, Ramos, U937, human brain, mouse brain, rat brain, mouse lung, mouse liver, rat liver, and chic...

Disclaimer

Disclaimer	Optimal dilutions/concentrations should be determined by the end user. The information provided is a guideline for product use. This product is for research use only.
------------	--

For research use only. For additional information, visit ProSci's [Terms and Conditions Page](#).