



ProSci Incorporated  
12170 Flint Place  
Poway, CA 92064, USA  
prosci-inc.com

P: +1 (888) 513-9525  
Local: +1 (858) 513-2638  
Fax: +1 (858) 513-2692

customercare@prosci-inc.com  
techsupport@prosci-inc.com

## beta-Actin Antibody

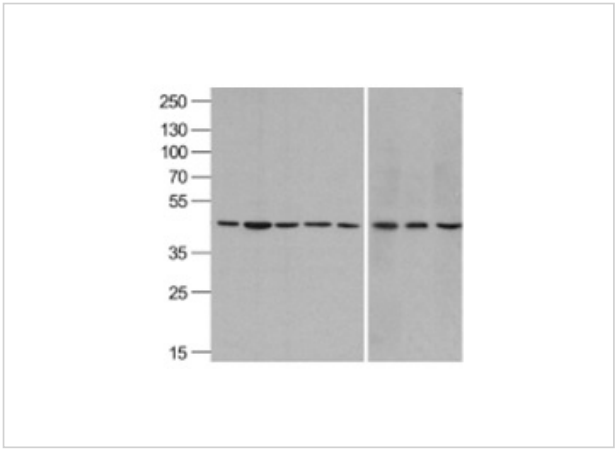
CATALOG NUMBER: 3779

### Specifications

Host Species	Rabbit
Species Reactivity	Human, Mouse, Rat
Immunogen	b-actin antibody was raised against a 16 amino acid synthetic peptide from near the amino-terminus of human b-actin.
Conjugate	Unconjugated
Tested Applications	ELISA, IF, IHC, WB
User Note	Optimal dilutions for each application to be determined by the researcher.

### Properties

Purification	beta-Actin Antibody is affinity chromatography purified via peptide column.
Clonality	Polyclonal
Isotype	IgG
Physical State	Liquid
Buffer	beta-Actin Antibody is supplied in PBS containing 0.02% sodium azide.
Concentration	1 mg/mL
Storage Conditions	beta-Actin antibody can be stored at 4°C for three months and -20°C, stable for up to one year. As with all antibodies care should be taken to avoid repeated freeze thaw cycles. Antibodies should not be exposed to prolonged high temperatures.



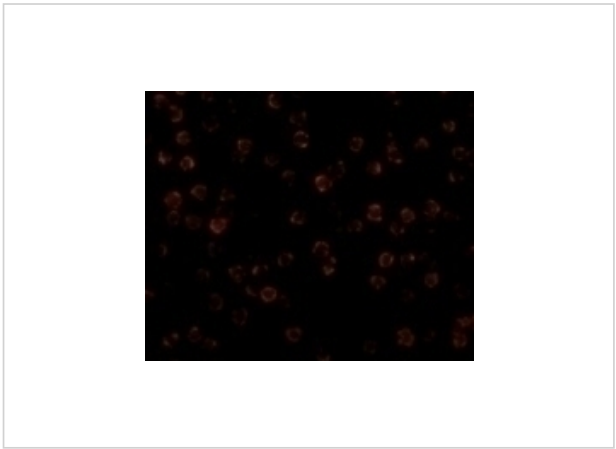
**beta-Actin Antibody 1**

Western blot analysis of beta-Actin in A431, Daudi, HepG2, HL60, Jurkat, Human brain, Mouse lung, and Chicken liver lysate with beta-Actin antibody at 1 µg/mL.



**beta-Actin Antibody 2**

Immunocytochemistry of Actin in HeLa cells with Actin antibody at 1 µg/mL.



**beta-Actin Antibody 3**

Immunofluorescence of beta-Actin in HeLa cells with beta-Actin antibody at 2 µg/mL.

**Disclaimer**

<b>Disclaimer</b>	Optimal dilutions/concentrations should be determined by the end user. The information provided is a guideline for product use. This product is for research use only.
-------------------	--

For research use only. For additional information, visit ProSci's [Terms and Conditions Page](#).