

Beta-actin Antibody

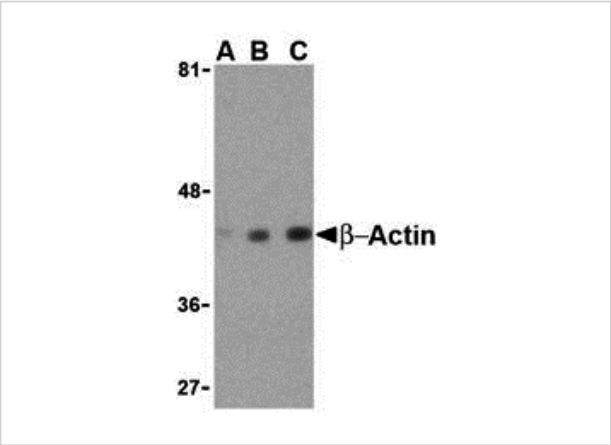
CATALOG NUMBER: 3777

Specifications

| | |
|----------------------------|--|
| Host Species | Rabbit |
| Species Reactivity | Human, Mouse, Rat |
| Homology | Predicted species reactivity based on immunogen sequence: Sheep: (100%), Rabbit: (100%), Pig: (100%), Horse: (100%), Chicken: (100%), Guinea pig: (100%), Bovine: (100%) |
| Immunogen | Beta-actin antibody was raised against a 16 amino acid synthetic peptide from near the carboxy terminus of human Beta-actin. The immunogen is located within the last 50 amino acids of Beta-actin. |
| Conjugate | Unconjugated |
| Tested Applications | ELISA, ICC, IF, WB |
| User Note | Optimal dilutions for each application to be determined by the researcher. |
| Predicted Molecular Weight | Predicted: 41 kDa Observed: 41 kDa |

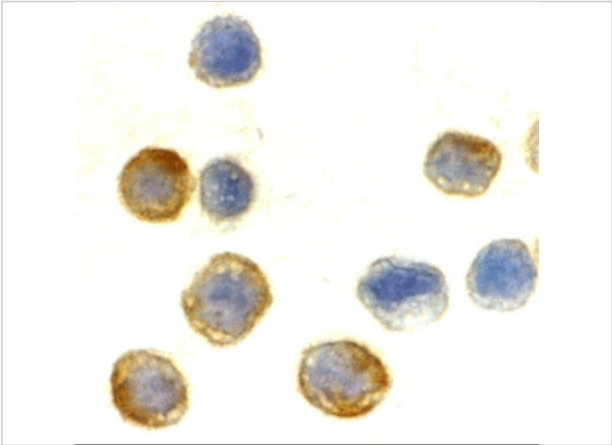
Properties

| | |
|--------------------|--|
| Purification | Beta-actin Antibody is affinity chromatography purified via peptide column. |
| Clonality | Polyclonal |
| Isotype | IgG |
| Physical State | Liquid |
| Buffer | Beta-actin Antibody is supplied in PBS containing 0.02% sodium azide. |
| Concentration | 1 mg/mL |
| Storage Conditions | Beta-actin antibody can be stored at 4°C for three months and -20°C, stable for up to one year. As with all antibodies care should be taken to avoid repeated freeze thaw cycles. Antibodies should not be exposed to prolonged high temperatures. |



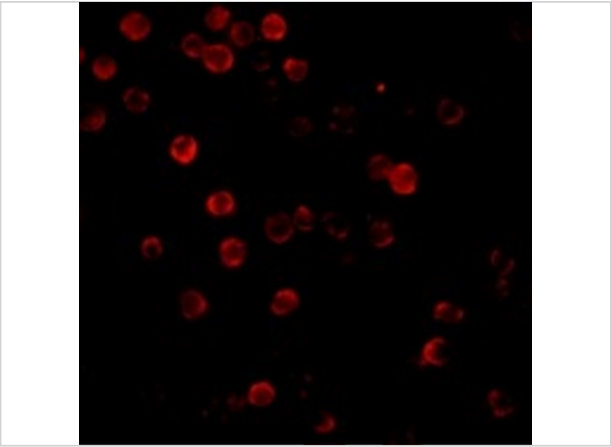
Beta-actin Antibody 1

Western blot analysis of beta-actin in HeLa cell lysate with beta-actin antibody at (A) 0.5, (B) 1 and (C) 2 µg/mL.



Beta-actin Antibody 2

Immunocytochemistry of beta-actin in HeLa cells with beta-actin antibody at 10 µg/mL.



Beta-actin Antibody 3

Immunofluorescence of Beta-actin in HeLa cells with Beta-actin antibody at 20 µg/mL.

Disclaimer

| | |
|------------|--|
| Disclaimer | Optimal dilutions/concentrations should be determined by the end user. The information provided is a guideline for product use. This product is for research use only. |
|------------|--|

For research use only. For additional information, visit ProSci's [Terms and Conditions Page](#).