

## EndoG Antibody

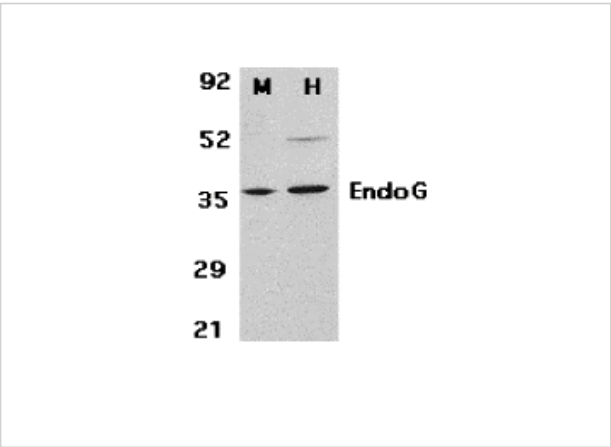
CATALOG NUMBER: 3035

### Specifications

Host Species	Rabbit
Species Reactivity	Human, Mouse, Rat
Immunogen	Anti-EndoG antibody ( <b>3035</b> ) was raised against a peptide corresponding to 15 amino acids near the amino terminus of human ENDOG. The immunogen is located within amino acids 40-90 of EndoG.
Conjugate	Unconjugated
Tested Applications	ELISA, IF, IHC-P, WB
User Note	Optimal dilutions for each application to be determined by the researcher.
Predicted Molecular Weight	Predicted: 33kD Observed: 33kD

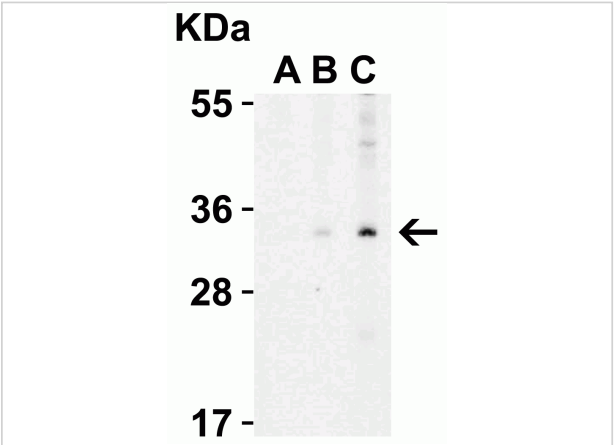
### Properties

Purification	EndoG Antibody is affinity chromatography purified via peptide column.
Clonality	Polyclonal
Isotype	IgG
Physical State	Liquid
Buffer	EndoG Antibody is supplied in PBS containing 0.02% sodium azide.
Concentration	1 mg/mL
Storage Conditions	EndoG antibody can be stored at 4°C up to one year. Antibodies should not be exposed to prolonged high temperatures.



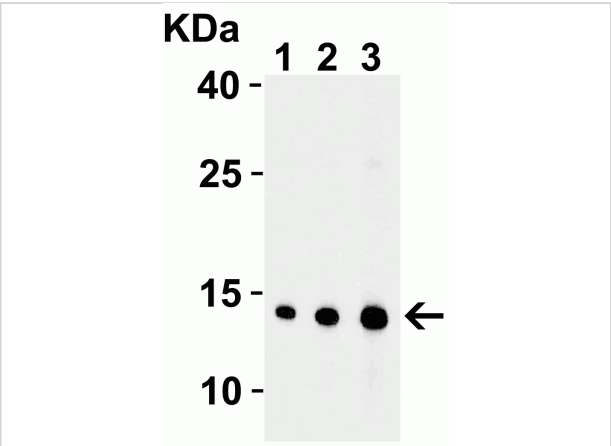
### EndoG Antibody 1

**Figure 1 Western Blot Validation in Mouse 3T3 (M) and Human HepG2 (H) Cell Lysates**  
 Loading: 15 µg of lysates per lane. Antibodies: EndoG 3035 (2 µg/mL), 1h incubation at RT in 5...



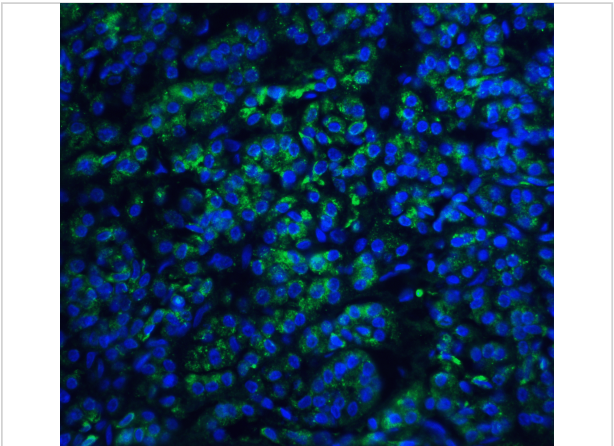
### EndoG Antibody 2

**Figure 2 Western Blot Validation in Human A431 Cell Lysate with the presence (A) or absence (B and C) of blocking peptide**  
 Loading: 15 µg of lysates per lane. Antibodies: EndoG 30...



### EndoG Antibody 3

**Figure 3 Western Blot Validation with Recombinant Protein**  
 Loading: 30 ng of human EndoG recombinant protein per lane. Antibodies: EndoG 3035, 1h incubation at RT in 5% NFDM/TBST...



### EndoG Antibody 4

**Figure 4 Immunofluorescence Validation of EndoG in Human Pancreas Tissue**  
 Immunofluorescent analysis of 4% paraformaldehyde-fixed human pancreas tissue labeling EndoG with 3035 a...

## Disclaimer

Disclaimer	Optimal dilutions/concentrations should be determined by the end user. The information provided is a guideline for product use. This product is for research use only.
------------	--

For research use only. For additional information, visit ProSci's [Terms and Conditions Page](#).