

## LSD1 Antibody

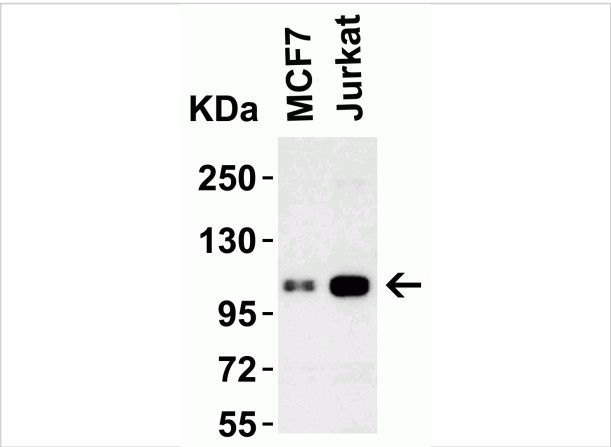
CATALOG NUMBER: 3763

### Specifications

Host Species	Rabbit
Species Reactivity	Human, Mouse, Rat
Immunogen	Anti-LSD1 antibody ( <b>3763</b> ) was raised against a peptide corresponding to 16 amino acids near the center of human LSD1. The immunogen is located within amino acids 140-190 of LSD1.
Conjugate	Unconjugated
Tested Applications	ELISA, IF, IHC-P, WB
User Note	Optimal dilutions for each application to be determined by the researcher.
Predicted Molecular Weight	Predicted: 93kD Observed: 110 kD

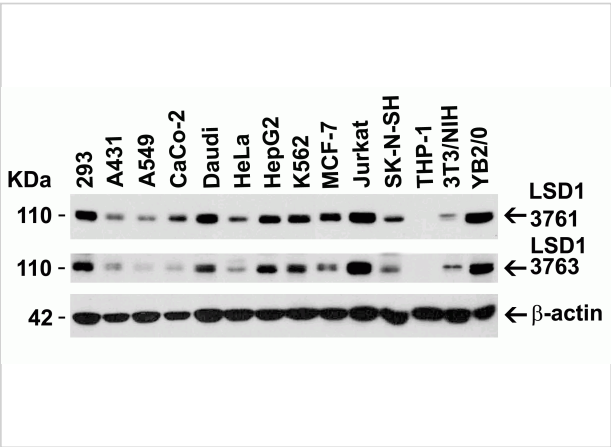
### Properties

Purification	LSD1 Antibody is affinity chromatography purified via peptide column.
Clonality	Polyclonal
Isotype	IgG
Physical State	Liquid
Buffer	LSD1 Antibody is supplied in PBS containing 0.02% sodium azide.
Concentration	1 mg/mL
Storage Conditions	LSD1 antibody can be stored at 4°C for three months and -20°C, stable for up to one year. As with all antibodies care should be taken to avoid repeated freeze thaw cycles. Antibodies should not be exposed to prolonged high temperatures.



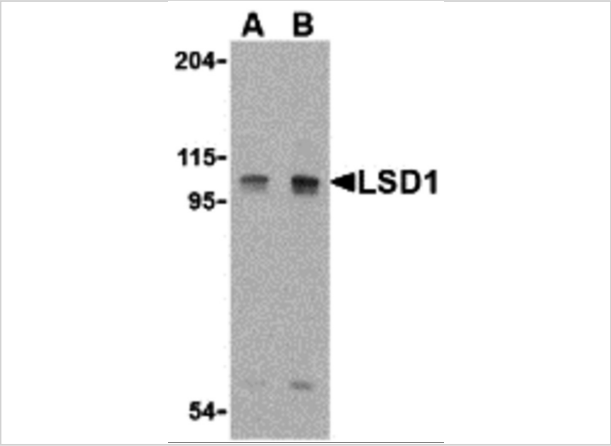
### LSD1 Antibody 1

**Figure 1 Western Blot Validation in Human Cell Lines**  
 Loading: 15 µg of lysates per lane. Antibodies: LSD1 3763 (1 µg/mL), 1h incubation at RT in 5% NFDM/TBST. Secondary: Goat ant...



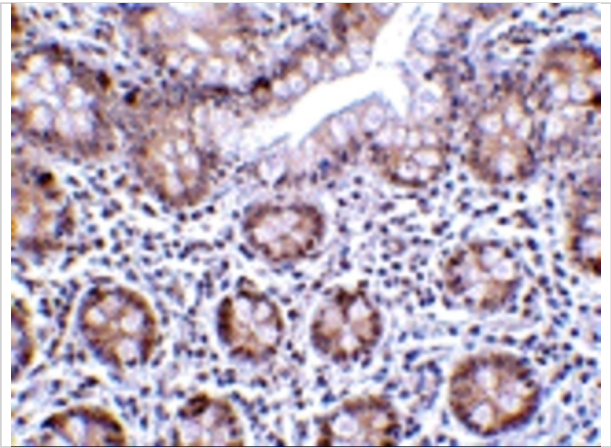
### LSD1 Antibody 2

**Figure 2 Independent Antibody Validation (IAV) via Protein Expression Profile in Cell Lines**  
 Loading: 15 µg of lysates per lane. Antibodies: LSD1 3761 (0.2 µg/mL), LSD1 3763 (1 µg...



### LSD1 Antibody 3

**Figure 3 Western Blot Validation in Mouse P815 Cell Lines**  
 Loading: 15 µg of lysates per lane. Antibodies: LSD1 3763, (A: 1 µg/mL, B: 2 µg/mL), 1h incubation at RT in 5% NFDM/TBST...



### LSD1 Antibody 4

**Figure 4 Immunohistochemistry Validation of LSD1 in Human Small Intestine Tissue**  
 Immunohistochemical analysis of paraffin-embedded human small intestine tissue using anti-LSD1...

## Disclaimer

#### Disclaimer

Optimal dilutions/concentrations should be determined by the end user. The information provided is a guideline for product use. This product is for research use only.

For research use only. For additional information, visit ProSci's [Terms and Conditions Page](#).