

LSD1 Antibody

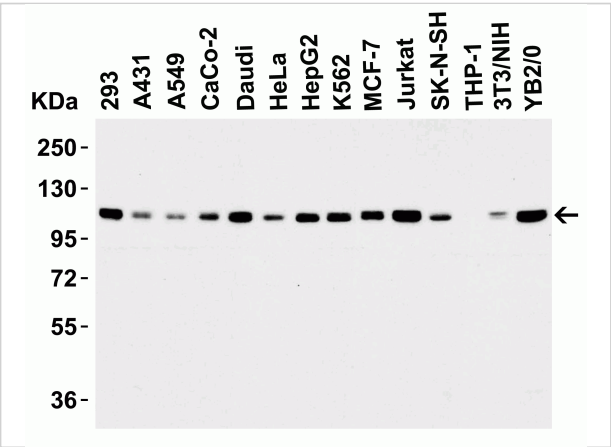
CATALOG NUMBER: 3761

Specifications

Host Species	Rabbit
Species Reactivity	Human, Mouse, Rat
Immunogen	Anti-LSD1 antibody (3761) was raised against a peptide corresponding to 17 amino acids near the amino terminus of human LSD1. The immunogen is located within amino acids 40-90 of LSD1.
Conjugate	Unconjugated
Tested Applications	ELISA, IF, IHC-P, WB
User Note	Optimal dilutions for each application to be determined by the researcher.
Predicted Molecular Weight	Predicted: 93kD Observed: 110 kD

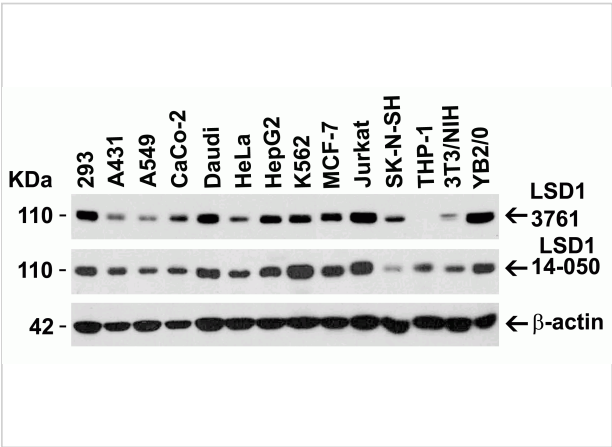
Properties

Purification	LSD1 Antibody is affinity chromatography purified via peptide column.
Clonality	Polyclonal
Isotype	IgG
Physical State	Liquid
Buffer	LSD1 Antibody is supplied in PBS containing 0.02% sodium azide.
Concentration	1 mg/mL
Storage Conditions	LSD1 antibody can be stored at 4°C for three months and -20°C, stable for up to one year. As with all antibodies care should be taken to avoid repeated freeze thaw cycles. Antibodies should not be exposed to prolonged high temperatures.



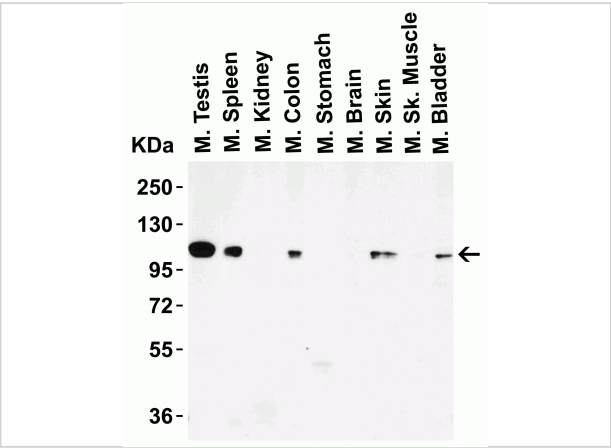
LSD1 Antibody 1

Figure 1 Western Blot Validation in Cell Lines
 Loading: 15 µg of lysates per lane. Antibodies: LSD1 3761 (0.2 µg/mL), 1h incubation at RT in 5% NFDm/TBST. Secondary: Goat anti-rab...



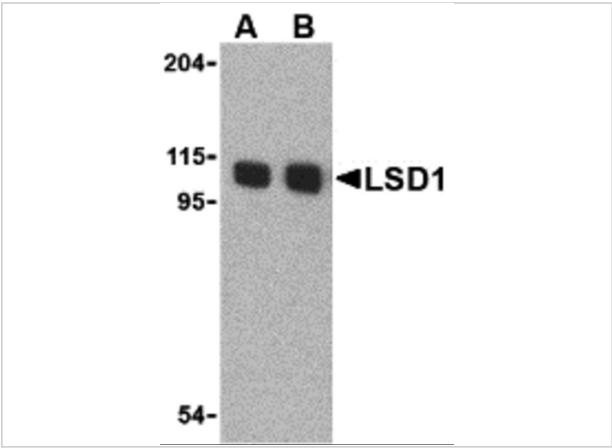
LSD1 Antibody 2

Figure 2 Independent Antibody Validation (IAV) via Protein Expression Profile in Cell Lines
 Loading: 15 µg of lysates per lane. Antibodies: LSD1 3761 (0.2 µg/mL), LSD1 14-050 (1 ...



LSD1 Antibody 3

Figure 3 Western Blot Validation in Mouse Tissues
 Loading: 15 µg of lysates per lane. Antibodies: LSD1 3761 (0.2 µg/mL), 1h incubation at RT in 5% NFDm/TBST. Secondary: Goat anti-...



LSD1 Antibody 4

Figure 4 Western Blot Validation in Mouse P815 Cell Lines
 Loading: 15 µg of lysates per lane. Antibodies: LSD1 3761, (A: 1 µg/mL, B: 2 µg/mL), 1h incubation at RT in 5% NFDm/TBST...

Disclaimer

Disclaimer	Optimal dilutions/concentrations should be determined by the end user. The information provided is a guideline for product use. This product is for research use only.
-------------------	--

For research use only. For additional information, visit ProSci's [Terms and Conditions Page](#).