

DDX3 Antibody

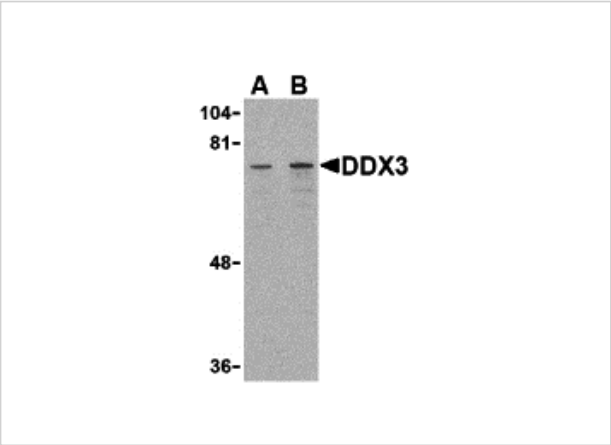
CATALOG NUMBER: 3759

Specifications

Host Species	Rabbit
Species Reactivity	Human, Mouse, Rat
Homology	Predicted species reactivity based on immunogen sequence: Bovine: (80%)
Immunogen	DDX3 antibody was raised against a 16 amino acid synthetic peptide from near the center of human DDX3. The immunogen is located within amino acids 460 - 510 of DDX3.
Conjugate	Unconjugated
Tested Applications	ELISA, ICC, WB
User Note	Optimal dilutions for each application to be determined by the researcher.
Specificity	DDX3 antibody will detect both DDX3 and DBY.

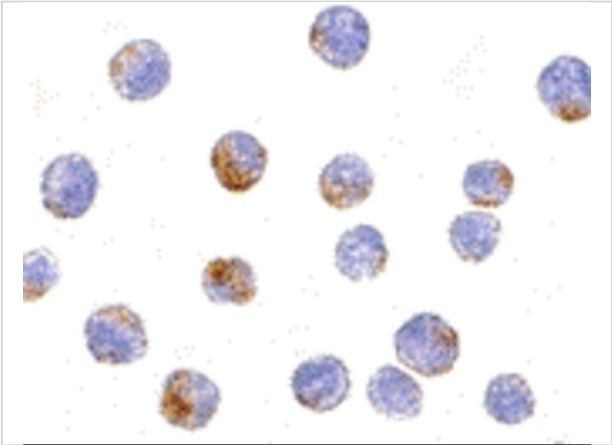
Properties

Purification	DDX3 Antibody is affinity chromatography purified via peptide column.
Clonality	Polyclonal
Isotype	IgG
Physical State	Liquid
Buffer	DDX3 Antibody is supplied in PBS containing 0.02% sodium azide.
Concentration	1 mg/mL
Storage Conditions	DDX3 antibody can be stored at 4°C for three months and -20°C, stable for up to one year. As with all antibodies care should be taken to avoid repeated freeze thaw cycles. Antibodies should not be exposed to prolonged high temperatures.



DDX3 Antibody 1

Western blot analysis of DDX3 in HepG2 cell lysate with DDX3 antibody at (A) 1 and (B) 2 µg/mL.



DDX3 Antibody 2

Immunocytochemistry of DDX3 in HepG2 cells with DDX3 antibody at 10 µg/mL.

Disclaimer

Disclaimer	Optimal dilutions/concentrations should be determined by the end user. The information provided is a guideline for product use. This product is for research use only.
------------	--

For research use only. For additional information, visit ProSci's [Terms and Conditions Page](#).