

IL-32 Antibody

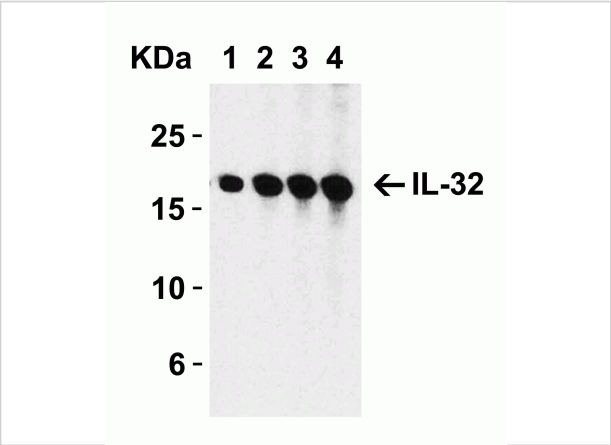
CATALOG NUMBER: 3751

Specifications

| | |
|----------------------------|--|
| Host Species | Rabbit |
| Species Reactivity | Human |
| Immunogen | Anti-IL-32 antibody (3751) was raised against a peptide corresponding to 16 amino acids near the center of human IL-32. The immunogen is located within amino acids 50 - 100 of IL-32. |
| Conjugate | Unconjugated |
| Tested Applications | ELISA, WB |
| User Note | Optimal dilutions for each application to be determined by the researcher. |
| Specificity | This antibody detects the largest isoform of IL-32. |
| Predicted Molecular Weight | Predicted: 26kD Observed: 26 kD |

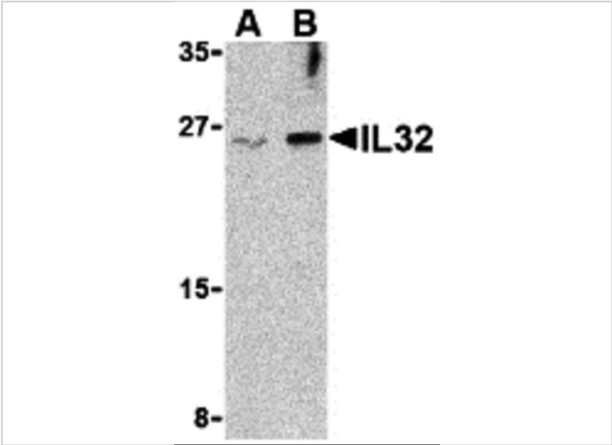
Properties

| | |
|--------------------|---|
| Purification | IL-32 Antibody is affinity chromatography purified via peptide column. |
| Clonality | Polyclonal |
| Isotype | IgG |
| Physical State | Liquid |
| Buffer | IL-32 Antibody is supplied in PBS containing 0.02% sodium azide. |
| Concentration | 1 mg/mL |
| Storage Conditions | IL-32 antibody can be stored at 4°C for three months and -20°C, stable for up to one year. As with all antibodies care should be taken to avoid repeated freeze thaw cycles. Antibodies should not be exposed to prolonged high temperatures. |



IL-32 Antibody 1

Figure 1 Western Blot Validation with Recombinant Protein
Loading: 30 ng of human IL-32 recombinant protein per lane. Antibodies: IL-32, 3751 (Lane 1: 0.5 µg/mL, Lane 2: 1 µg/mL,...



IL-32 Antibody 2

Figure 2 Western Blot Validation in Jurkat Cell Lysate
Loading: 15 µg of lysates per lane. Antibodies: IL-32, 3751 (A: 2.5 µg/mL and B: 5 µg/mL), 1h incubation at RT in 5% NFDN/T...

Disclaimer

| | |
|------------|--|
| Disclaimer | Optimal dilutions/concentrations should be determined by the end user. The information provided is a guideline for product use. This product is for research use only. |
|------------|--|

For research use only. For additional information, visit ProSci's [Terms and Conditions Page](#).