

## XBP-1 Antibody

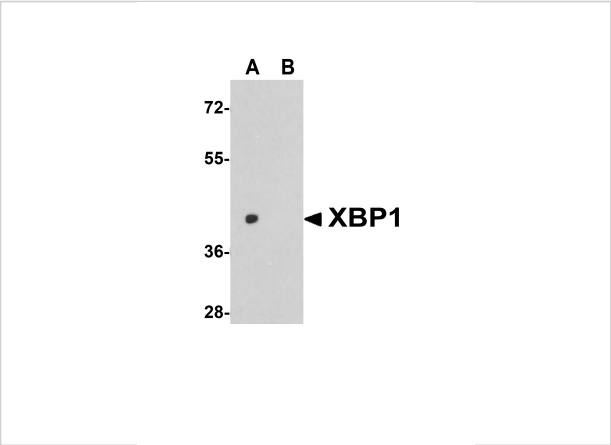
CATALOG NUMBER: 3687

### Specifications

Host Species	Rabbit
Species Reactivity	Human, Mouse, Rat
Homology	Predicted species reactivity based on immunogen sequence: Bovine: (100%)
Immunogen	Anti-XBP-1 antibody ( <b>3687</b> ) was raised against a peptide corresponding to 17 amino acids near the amino terminus of human XBP-1. The immunogen is located within amino acids 40 - 90 of XBP-1.
Conjugate	Unconjugated
Tested Applications	ELISA, ICC, IF, IHC-P, WB
User Note	Optimal dilutions for each application to be determined by the researcher.
Predicted Molecular Weight	Predicted: 28/40kD Observed: 28/40 kD

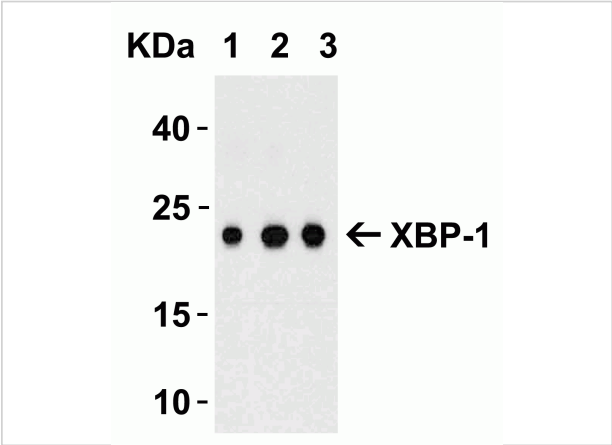
### Properties

Purification	XBP-1 Antibody is affinity chromatography purified via peptide column.
Clonality	Polyclonal
Isotype	IgG
Physical State	Liquid
Buffer	XBP-1 Antibody is supplied in PBS containing 0.02% sodium azide.
Concentration	1 mg/mL
Storage Conditions	XBP-1 antibody can be stored at 4°C for three months and -20°C, stable for up to one year. As with all antibodies care should be taken to avoid repeated freeze thaw cycles. Antibodies should not be exposed to prolonged high temperatures.



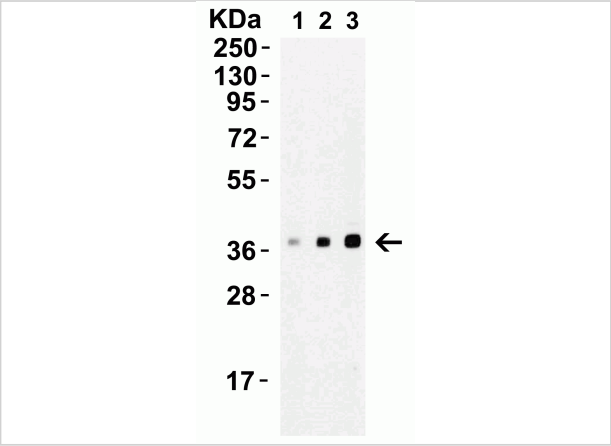
XBP-1 Antibody 1

**Figure 1 Western Blot Validation in Human HepG2 Cell Lysate**  
Loading: 15 µg of lysates per lane. Antibodies: XBP-1 3687 (1 µg/mL), 1h incubation at RT in 5% NFDm/TBST. Secondary: ...



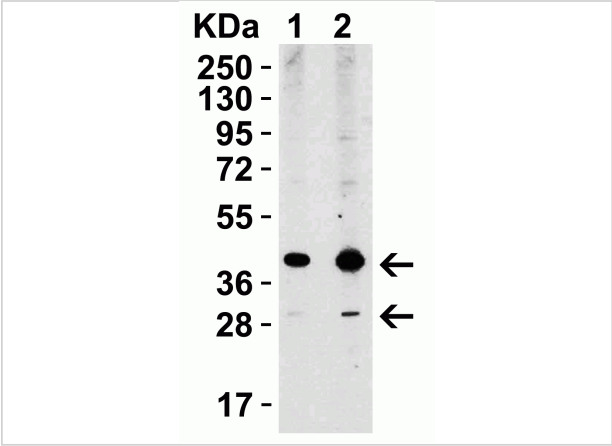
XBP-1 Antibody 2

**Figure 2 Western Blot Validation with Recombinant Protein**  
Loading: 100 ng of human XBP-1 recombinant protein per lane. Antibodies: XBP-1 3687 (A: 0.5 µg/mL, B: 1 µg/mL and C: 2 ...



XBP-1 Antibody 3

**Figure 3 Western Blot Validation of XBP-1 in A549 Cells**  
Loading: 15 µg of A549 cell lysate. Antibodies: XBP-1 3687, 1h incubation at RT in 5% NFDm/TBST. Secondary: Goat anti-rabbi...



XBP-1 Antibody 4

**Figure 4 Western Blot Validation of XBP-1 in HepG2 Cells**  
Loading: 15 µg of HepG2 cell lysate. Antibodies: XBP-1 3687, 1h incubation at RT in 5% NFDm/TBST. Secondary: Goat anti-rabbi...

Disclaimer

Disclaimer	Optimal dilutions/concentrations should be determined by the end user. The information provided is a guideline for product use. This product is for research use only.
------------	--

For research use only. For additional information, visit ProSci's [Terms and Conditions Page](#).