

Bcl-rambo Antibody

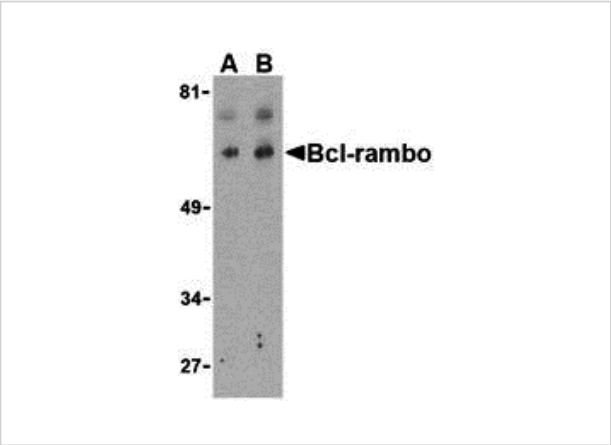
CATALOG NUMBER: 3023

Specifications

Host Species	Rabbit
Species Reactivity	Human, Mouse, Rat
Immunogen	Bcl-rambo antibody was raised against a 15 amino acid synthetic peptide from near the center of human Bcl-rambo. The immunogen is located within amino acids 280 - 330 of Bcl-rambo.
Conjugate	Unconjugated
Tested Applications	ELISA, IF, IHC-P, WB
User Note	Optimal dilutions for each application to be determined by the researcher.

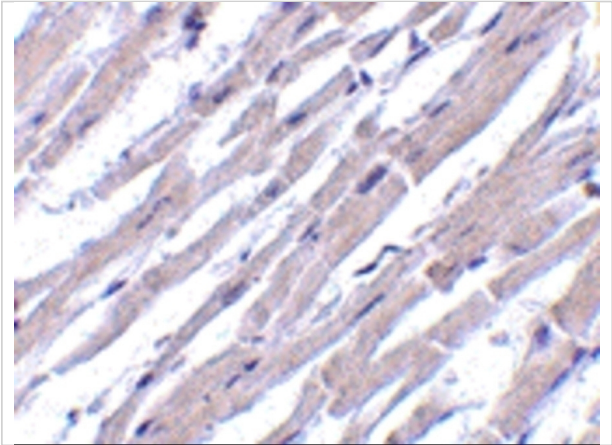
Properties

Purification	Bcl-rambo Antibody is affinity chromatography purified via peptide column.
Clonality	Polyclonal
Isotype	IgG
Physical State	Liquid
Buffer	Bcl-rambo Antibody is supplied in PBS containing 0.02% sodium azide.
Concentration	1 mg/mL
Storage Conditions	Bcl-rambo antibody can be stored at 4°C for three months and -20°C, stable for up to one year. As with all antibodies care should be taken to avoid repeated freeze thaw cycles. Antibodies should not be exposed to prolonged high temperatures.



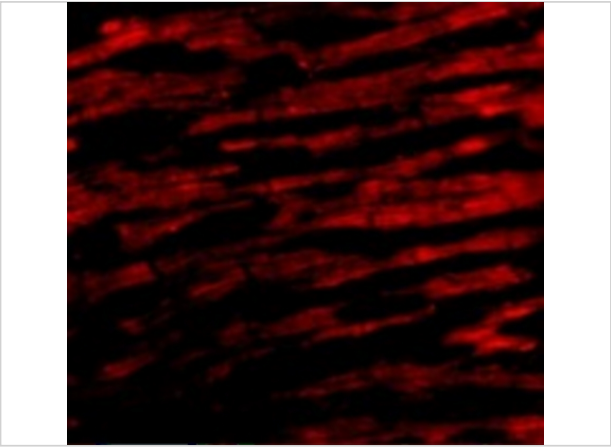
Bcl-rambo Antibody 1

Western blot analysis of Bcl-rambo in K562 cell lysate with Bcl-rambo antibody at (A) 2 and (B) 4 $\mu\text{g/mL}$.



Bcl-rambo Antibody 2

Immunohistochemistry of Bcl-rambo in human heart tissue with Bcl-rambo antibody at 10 $\mu\text{g/mL}$.



Bcl-rambo Antibody 3

Immunofluorescence of Bcl-rambo in Human Heart cells with Bcl-rambo antibody at 20 $\mu\text{g/mL}$.

Disclaimer

Disclaimer	Optimal dilutions/concentrations should be determined by the end user. The information provided is a guideline for product use. This product is for research use only.
------------	--

For research use only. For additional information, visit ProSci's [Terms and Conditions Page](#).