

TRAF2 Antibody

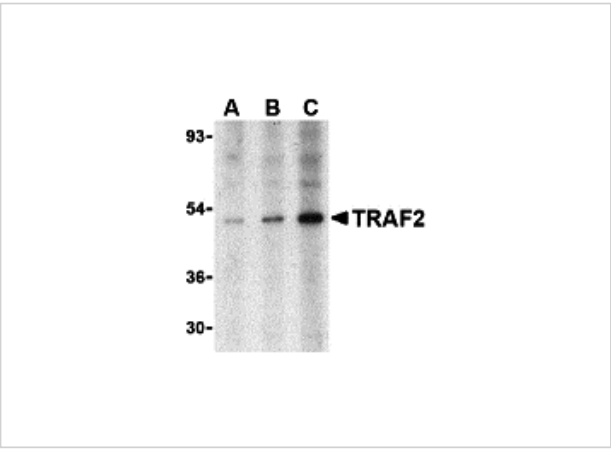
CATALOG NUMBER: 3663

Specifications

Host Species	Rabbit
Species Reactivity	Human, Mouse, Rat
Immunogen	TRAF2 antibody was raised against a 16 amino acid synthetic peptide from near the amino terminus of human TRAF2. The immunogen is located within amino acids 180 - 230 of TRAF2.
Conjugate	Unconjugated
Tested Applications	ELISA, IF, IHC-P, IP, WB
User Note	Optimal dilutions for each application to be determined by the researcher.

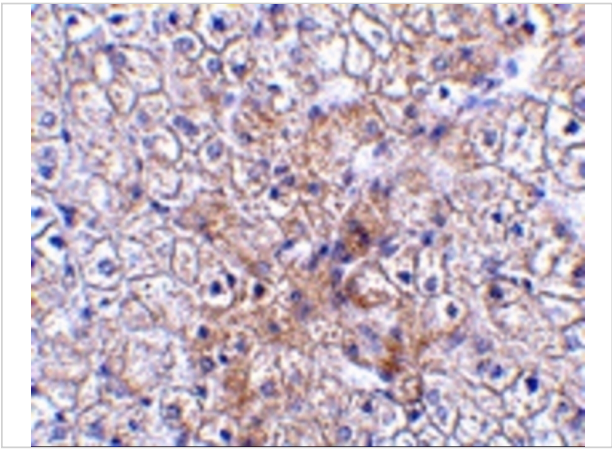
Properties

Purification	TRAF2 Antibody is affinity chromatography purified via peptide column.
Clonality	Polyclonal
Isotype	IgG
Physical State	Liquid
Buffer	TRAF2 Antibody is supplied in PBS containing 0.02% sodium azide.
Concentration	1 mg/mL
Storage Conditions	TRAF2 antibody can be stored at 4°C for three months and -20°C, stable for up to one year. As with all antibodies care should be taken to avoid repeated freeze thaw cycles. Antibodies should not be exposed to prolonged high temperatures.



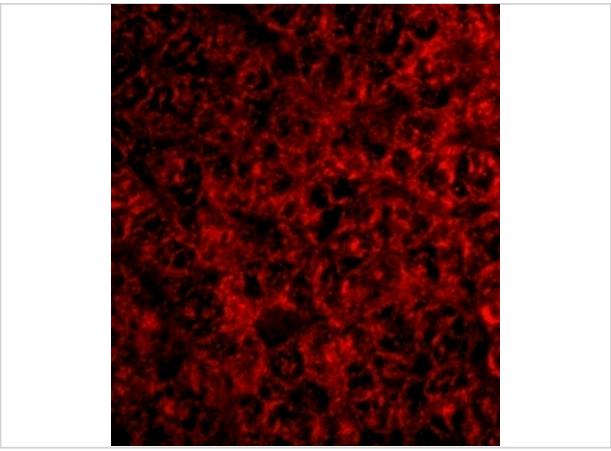
TRAF2 Antibody 1

Western blot analysis of TRAF2 in human liver tissue lysate with TRAF2 antibody at (A) 0.5, (B) 1 and (C) 2 µg/mL.



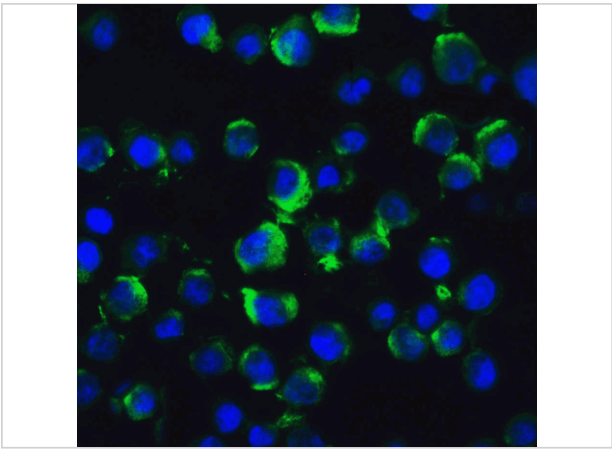
TRAF2 Antibody 2

Immunohistochemistry of TRAF2 in human liver tissue with TRAF2 antibody at 2.5 µg/mL.



TRAF2 Antibody 3

Immunofluorescence of TRAF2 in human liver tissue with TRAF2 antibody at 20 µg/mL.



TRAF2 Antibody 4

Immunofluorescence of TRAF2 in HeLa cells with TRAF2 antibody at 20 µg/mL.

Green: TRAF2 Antibody (3663)
Blue: DAPI staining

Disclaimer

Disclaimer	Optimal dilutions/concentrations should be determined by the end user. The information provided is a guideline for product use. This product is for research use only.
------------	--

For research use only. For additional information, visit ProSci's [Terms and Conditions Page](#).