

ILP-2 Antibody

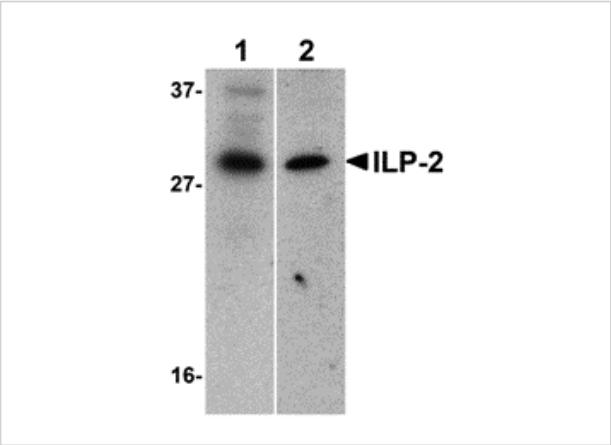
CATALOG NUMBER: 3017

Specifications

Host Species	Rabbit
Species Reactivity	Human, Mouse, Rat
Immunogen	ILP-2 antibody was raised with against a synthetic peptide corresponding to amino acids near the amino terminus of human ILP-2. The immunogen is located within the first 50 amino acids of ILP-2.
Conjugate	Unconjugated
Tested Applications	ELISA, ICC, IF, WB
User Note	Optimal dilutions for each application to be determined by the researcher.
Predicted Molecular Weight	33 kDa

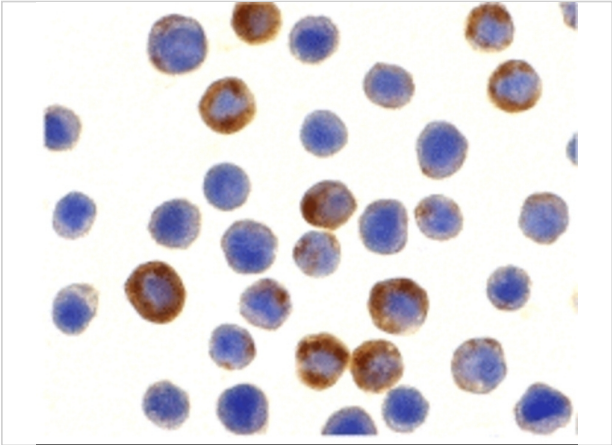
Properties

Purification	ILP-2 Antibody is affinity chromatography purified via peptide column.
Clonality	Polyclonal
Isotype	IgG
Physical State	Liquid
Buffer	ILP-2 Antibody is supplied in PBS containing 0.02% sodium azide.
Concentration	1 mg/mL
Storage Conditions	ILP-2 antibody can be stored at 4°C for three months and -20°C, stable for up to one year. As with all antibodies care should be taken to avoid repeated freeze thaw cycles. Antibodies should not be exposed to prolonged high temperatures.



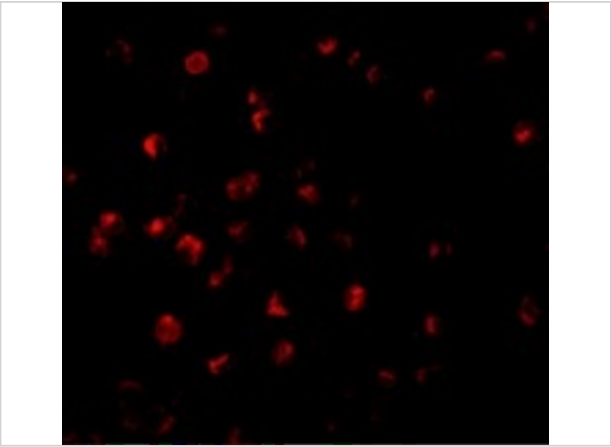
ILP-2 Antibody 1

Western blot analysis of ILP-2 expression in human HepG2 (lane 1) and MOLT4 (lane 2) cell lysates with ILP-2 antibody at 1 µg/mL.



ILP-2 Antibody 2

Immunocytochemistry of ILP-2 in HepG2 cells with ILP-2 antibody at 10 µg/mL.



ILP-2 Antibody 3

Immunofluorescence of ILP-2 in HepG2 cells with ILP-2 antibody at 20 µg/mL.

Disclaimer

Disclaimer	Optimal dilutions/concentrations should be determined by the end user. The information provided is a guideline for product use. This product is for research use only.
------------	--

For research use only. For additional information, visit ProSci's [Terms and Conditions Page](#).