

TLR6 Antibody

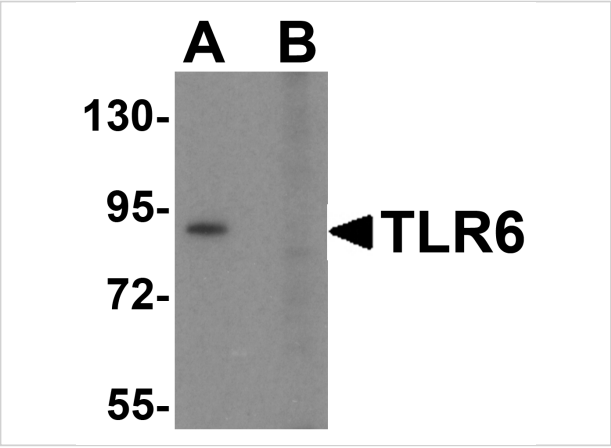
CATALOG NUMBER: 3651

Specifications

Host Species	Rabbit
Species Reactivity	Human, Mouse
Immunogen	TLR6 antibody was raised against a peptide corresponding to 15 amino acids near the amino terminus of human TLR6. The immunogen is located within amino acids 160 - 210 of TLR6.
Conjugate	Unconjugated
Tested Applications	ELISA, ICC, WB
User Note	Optimal dilutions for each application to be determined by the researcher.
Specificity	This TLR6 antibody is predicted to have no cross-reactivity to other members of the TLR protein family.
Predicted Molecular Weight	Observed: 91 kDa

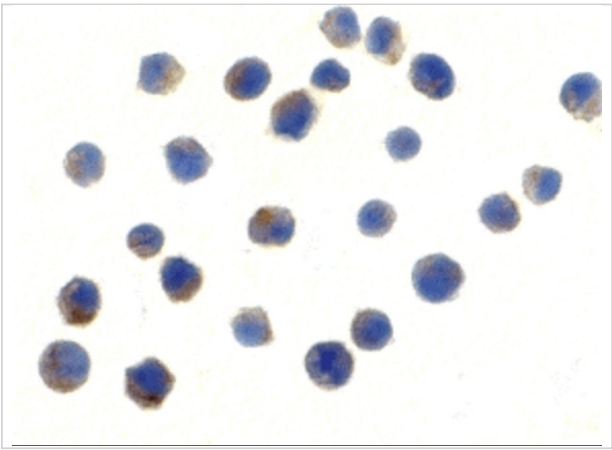
Properties

Purification	TLR6 Antibody is affinity chromatography purified via peptide column.
Clonality	Polyclonal
Isotype	IgG
Physical State	Liquid
Buffer	TLR6 Antibody is supplied in PBS containing 0.02% sodium azide.
Concentration	1 mg/mL
Storage Conditions	TLR6 antibody can be stored at 4°C for three months and -20°C, stable for up to one year. As with all antibodies care should be taken to avoid repeated freeze thaw cycles. Antibodies should not be exposed to prolonged high temperatures.



TLR6 Antibody 1

Western blot analysis of TLR6 in Daudi cell lysate with TLR6 antibody at 1 µg/mL in (A) the absence and (B) the presence of blocking peptide.



TLR6 Antibody 2

Immunocytochemistry of TLR6 in Jurkat cells with TLR6 antibody at 10 µg/mL.

Disclaimer

Disclaimer	Optimal dilutions/concentrations should be determined by the end user. The information provided is a guideline for product use. This product is for research use only.
------------	--

For research use only. For additional information, visit ProSci's [Terms and Conditions Page](#).