



ProSci Incorporated
12170 Flint Place
Poway, CA 92064, USA
prosci-inc.com

P: +1 (888) 513-9525
Local: +1 (858) 513-2638
Fax: +1 (858) 513-2692

customercare@prosci-inc.com
techsupport@prosci-inc.com

PIST Antibody

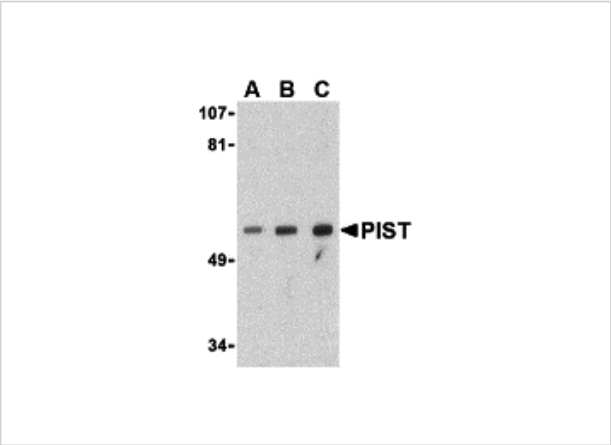
CATALOG NUMBER: 3633

Specifications

Host Species	Rabbit
Species Reactivity	Human, Mouse
Immunogen	PIST antibody was raised against a 17 amino acid synthetic peptide from near the center of human PIST. The immunogen is located within amino acids 240 - 290 of PIST.
Conjugate	Unconjugated
Tested Applications	ELISA, IF, IHC-P, WB
User Note	Optimal dilutions for each application to be determined by the researcher.

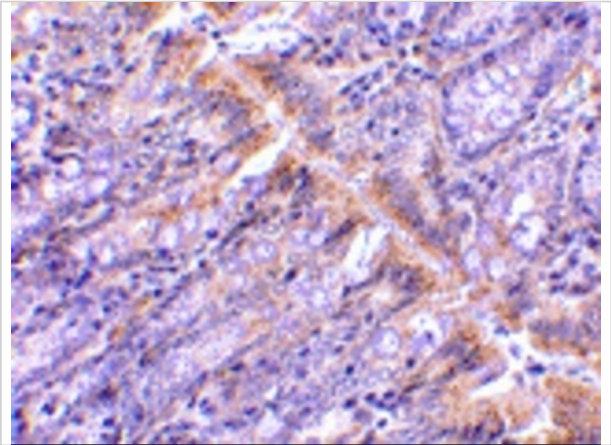
Properties

Purification	PIST Antibody is affinity chromatography purified via peptide column.
Clonality	Polyclonal
Isotype	IgG
Physical State	Liquid
Buffer	PIST Antibody is supplied in PBS containing 0.02% sodium azide.
Concentration	1 mg/mL
Storage Conditions	PIST antibody can be stored at 4°C for three months and -20°C, stable for up to one year. As with all antibodies care should be taken to avoid repeated freeze thaw cycles. Antibodies should not be exposed to prolonged high temperatures.



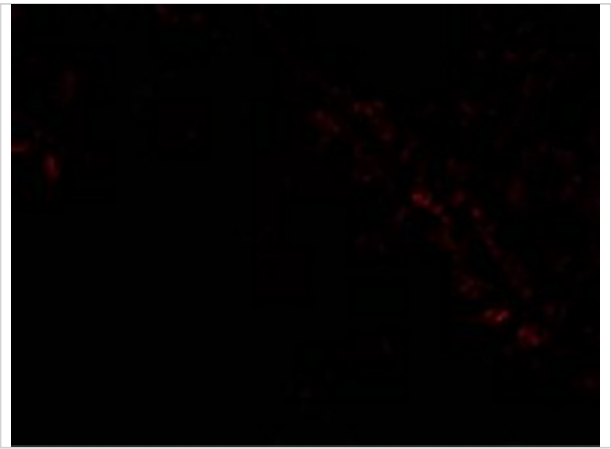
PIST Antibody 1

Western blot analysis of PIST in PC-3 cell lysate with PIST antibody at (A) 1, (B) 2 and (C) 4 µg/mL.



PIST Antibody 2

Immunohistochemistry of PIST in rat colon tissue with PIST antibody at 1 µg/mL.



PIST Antibody 3

Immunofluorescence of PIST in Rat Colon cells with PIST antibody at 20 µg/mL.

Disclaimer

Disclaimer	Optimal dilutions/concentrations should be determined by the end user. The information provided is a guideline for product use. This product is for research use only.
------------	--

For research use only. For additional information, visit ProSci's [Terms and Conditions Page](#).