

LAMP-2 Antibody

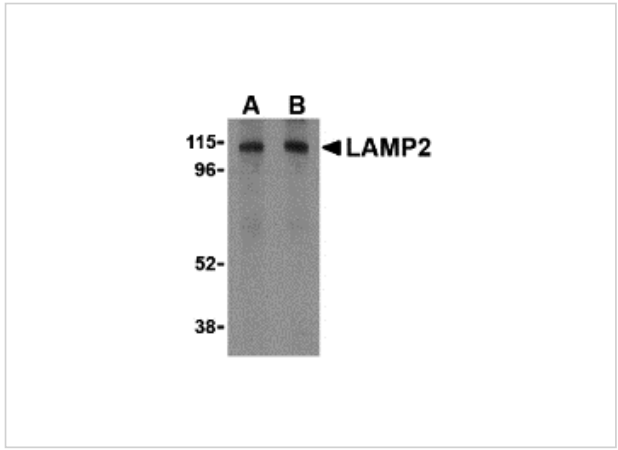
CATALOG NUMBER: 3627

Specifications

Host Species	Rabbit
Species Reactivity	Human, Mouse
Homology	Predicted species reactivity based on immunogen sequence: Chicken: (75%), Rat: (75%), Bovine: (75%)
Immunogen	LAMP-2 antibody was raised against a 17 amino acid synthetic peptide from near the carboxy terminus of human LAMP-2. The immunogen is located within the last 50 amino acids of LAMP-2.
Conjugate	Unconjugated
Tested Applications	ELISA, ICC, IHC-P, WB
User Note	Optimal dilutions for each application to be determined by the researcher.
Specificity	LAMP-2 antibody cross reacts with LAMP2B and LAMP2C, but not LAMP2A.

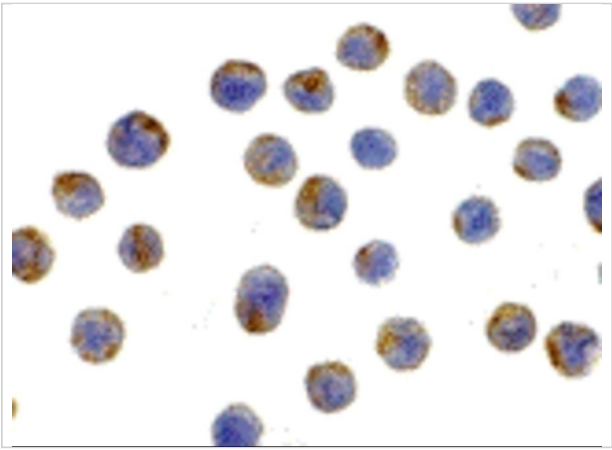
Properties

Purification	LAMP-2 Antibody is affinity chromatography purified via peptide column.
Clonality	Polyclonal
Isotype	IgG
Physical State	Liquid
Buffer	LAMP-2 Antibody is supplied in PBS containing 0.02% sodium azide.
Concentration	1 mg/mL
Storage Conditions	LAMP-2 antibody can be stored at 4°C for three months and -20°C, stable for up to one year. As with all antibodies care should be taken to avoid repeated freeze thaw cycles. Antibodies should not be exposed to prolonged high temperatures.



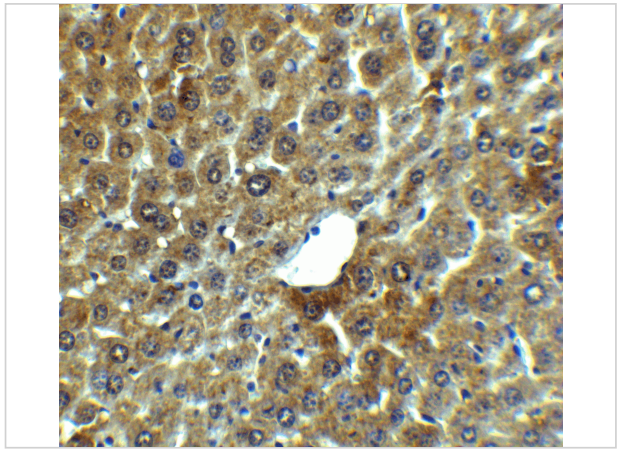
LAMP-2 Antibody 1

Western blot analysis of LAMP-2 in HepG2 cell lysate with LAMP-2 antibody at (A) 1 and (B) 2 $\mu\text{g/mL}$.



LAMP-2 Antibody 2

Immunocytochemistry of LAMP-2 in HepG2 cells with LAMP-2 antibody at 10 $\mu\text{g/mL}$.



LAMP-2 Antibody 3

Immunohistochemistry of LAMP-2 in mouse liver tissue with LAMP-2 Antibody at 5 $\mu\text{g/mL}$.

Disclaimer

Disclaimer	Optimal dilutions/concentrations should be determined by the end user. The information provided is a guideline for product use. This product is for research use only.
------------	--

For research use only. For additional information, visit ProSci's [Terms and Conditions Page](#).