

## CRMP1 Antibody

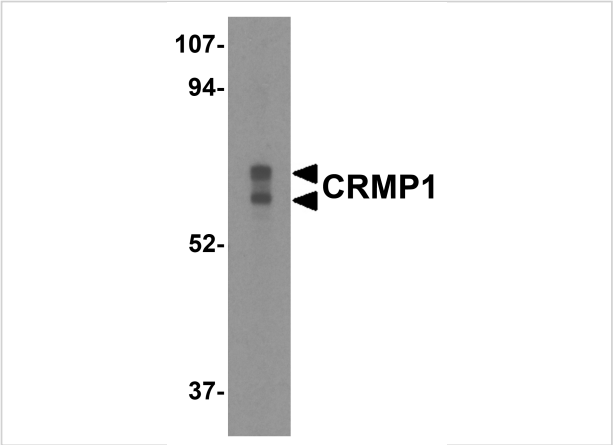
CATALOG NUMBER: 3625

### Specifications

Host Species	Rabbit
Species Reactivity	Human, Mouse
Homology	Predicted species reactivity based on immunogen sequence: Rat: (100%), Chicken: (93%)
Immunogen	CRMP1 antibody was raised against a 16 amino acid synthetic peptide from near the center of human CRMP1. The immunogen is located within amino acids 290 - 340 of CRMP1.
Conjugate	Unconjugated
Tested Applications	ELISA, IF, IHC-P, WB
User Note	Optimal dilutions for each application to be determined by the researcher.
Predicted Molecular Weight	Predicted: 63, 75 kDa Observed: 63, 75 kDa

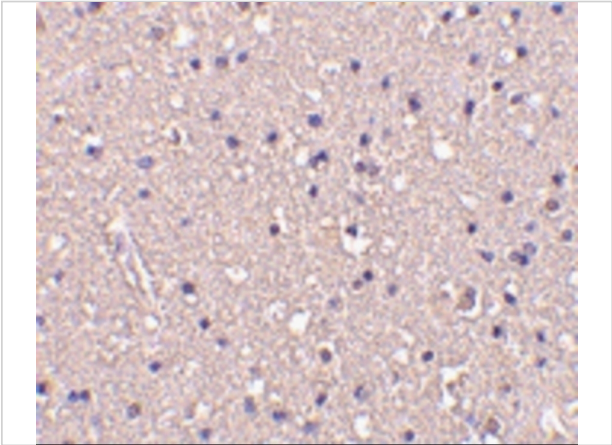
### Properties

Purification	CRMP1 Antibody is affinity chromatography purified via peptide column.
Clonality	Polyclonal
Isotype	IgG
Physical State	Liquid
Buffer	CRMP1 Antibody is supplied in PBS containing 0.02% sodium azide.
Concentration	1 mg/mL
Storage Conditions	CRMP1 antibody can be stored at 4°C for three months and -20°C, stable for up to one year. As with all antibodies care should be taken to avoid repeated freeze thaw cycles. Antibodies should not be exposed to prolonged high temperatures.



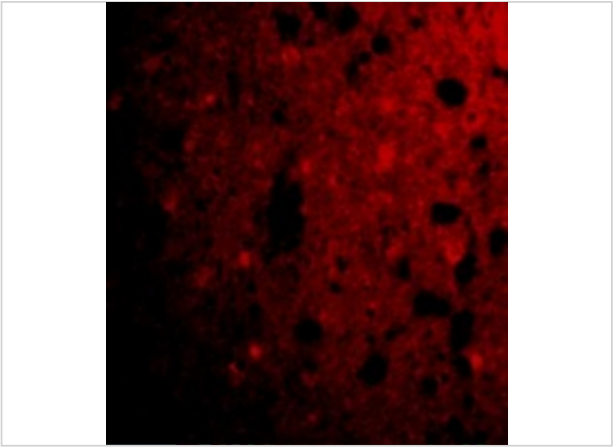
**CRMP1 Antibody 1**

Western blot analysis of CRMP1 in Caco-2 cell lysate with CRMP1 antibody at 0.5 µg/mL.



**CRMP1 Antibody 2**

Immunohistochemistry of CRMP1 in human brain tissue with CRMP1 antibody at 10 µg/mL.



**CRMP1 Antibody 3**

Immunofluorescence of CRMP1 in Human Brain cells with CRMP1 antibody at 20 µg/mL.

**Disclaimer**

<b>Disclaimer</b>	Optimal dilutions/concentrations should be determined by the end user. The information provided is a guideline for product use. This product is for research use only.
-------------------	--

For research use only. For additional information, visit ProSci's [Terms and Conditions Page](#).