

## Beclin-1 Antibody

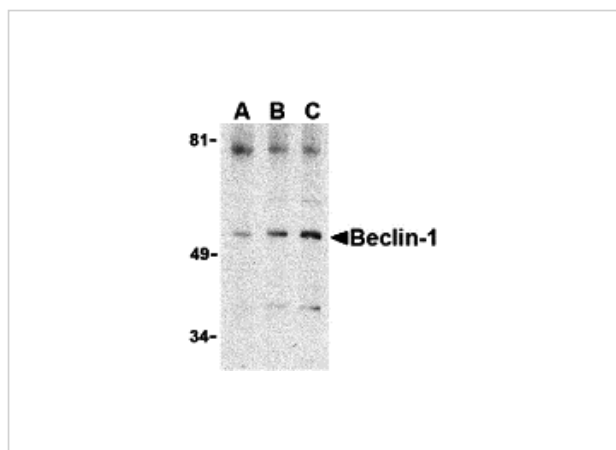
CATALOG NUMBER: 3611

### Specifications

Host Species	Rabbit
Species Reactivity	Human, Mouse
Homology	Predicted species reactivity based on immunogen sequence: Chicken: (100%), Pig: (100%), Rat: (100%), Bovine: (100%)
Immunogen	Beclin-1 antibody was raised against a 16 amino acid synthetic peptide from near the carboxy terminus of human Beclin-1. The immunogen is located within the last 50 amino acids of Beclin-1.
Conjugate	Unconjugated
Tested Applications	ELISA, ICC, IF, WB
User Note	Optimal dilutions for each application to be determined by the researcher.

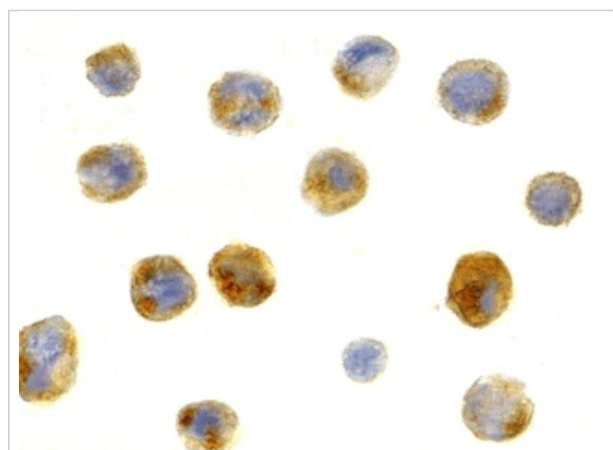
### Properties

Purification	Beclin-1 Antibody is affinity chromatography purified via peptide column.
Clonality	Polyclonal
Isotype	IgG
Physical State	Liquid
Buffer	Beclin-1 Antibody is supplied in PBS containing 0.02% sodium azide.
Concentration	1 mg/mL
Storage Conditions	Beclin-1 antibody can be stored at 4°C up to one year. Antibodies should not be exposed to prolonged high temperatures.



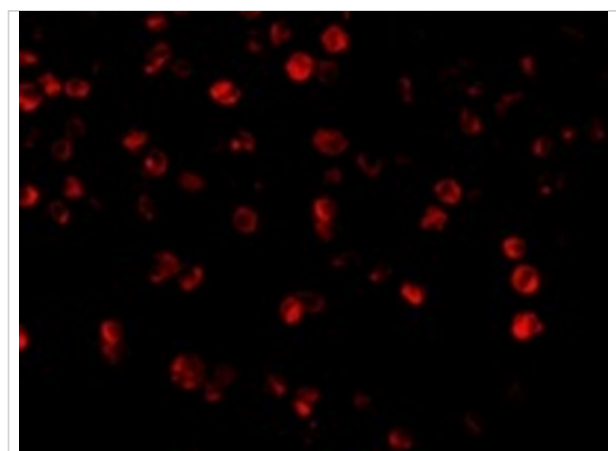
## Beclin-1 Antibody 1

Western blot analysis of Beclin-1 in A431 cell lysate with Beclin-1 antibody at (A) 0.5, (B) 1 and (C) 2  $\mu\text{g/mL}$ .



## Beclin-1 Antibody 2

Immunocytochemistry staining of A431 cells using Beclin-1 antibody at 1  $\mu\text{g/mL}$ .



## Beclin-1 Antibody 3

Immunofluorescence of Beclin-1 in A431 cells with Beclin-1 antibody at 2  $\mu\text{g/mL}$ .

## Disclaimer

### Disclaimer

Optimal dilutions/concentrations should be determined by the end user. The information provided is a guideline for product use. This product is for research use only.

For research use only. For additional information, visit ProSci's [Terms and Conditions Page](#).