

CTRP7 Antibody

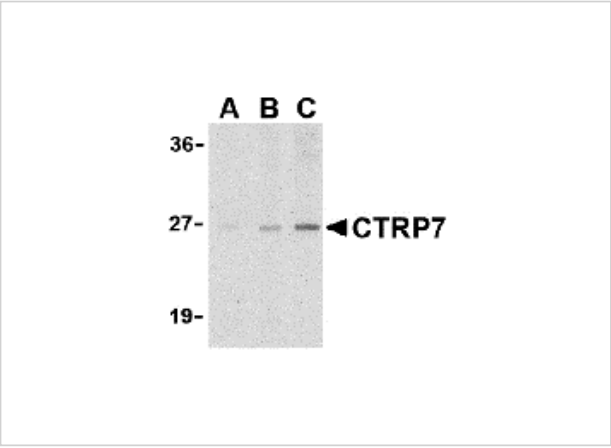
CATALOG NUMBER: 3581

Specifications

Host Species	Rabbit
Species Reactivity	Human, Mouse, Rat
Immunogen	CTRP7 antibody was raised against a 15 amino acid synthetic peptide from near the amino terminus of human CTRP7. The immunogen is located within the first 50 amino acids of CTRP7.
Conjugate	Unconjugated
Tested Applications	ELISA, IHC-P, WB
User Note	Optimal dilutions for each application to be determined by the researcher.
Specificity	These proteins often migrate in SDS-PAGE at positions other than their predicted size.

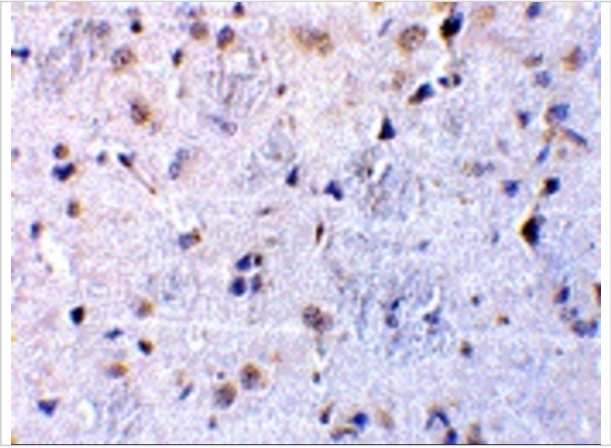
Properties

Purification	CTRP7 Antibody is affinity chromatography purified via peptide column.
Clonality	Polyclonal
Isotype	IgG
Physical State	Liquid
Buffer	CTRP7 Antibody is supplied in PBS containing 0.02% sodium azide.
Concentration	1 mg/mL
Storage Conditions	CTRP7 antibody can be stored at 4°C for three months and -20°C, stable for up to one year. As with all antibodies care should be taken to avoid repeated freeze thaw cycles. Antibodies should not be exposed to prolonged high temperatures.



CTR7 Antibody 1

Western blot analysis of CTR7 in 3T3 cell lysate with CTR7 antibody at (A) 1, (B) 2, and (C) 4 µg/mL.



CTR7 Antibody 2

Immunohistochemical staining of rat brain tissue using CTR7 antibody at 10 µg/mL.

Disclaimer

Disclaimer	Optimal dilutions/concentrations should be determined by the end user. The information provided is a guideline for product use. This product is for research use only.
------------	--

For research use only. For additional information, visit ProSci's [Terms and Conditions Page](#).