

## CTRP4 Antibody

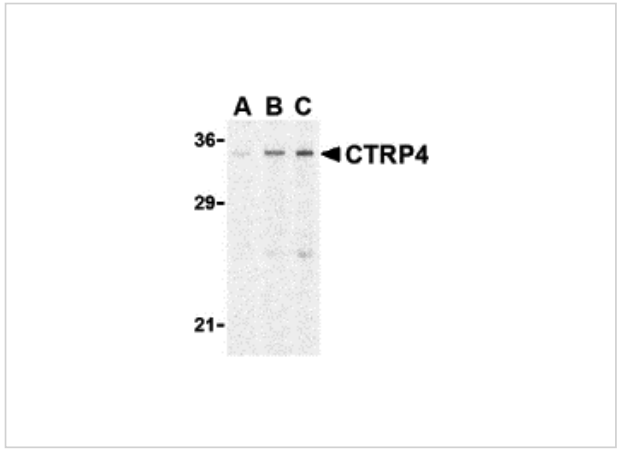
CATALOG NUMBER: 3569

### Specifications

Host Species	Rabbit
Species Reactivity	Human, Mouse, Rat
Immunogen	CTRP4 antibody was raised against a 16 amino acid synthetic peptide from near the center of human CTRP4. The immunogen is located within amino acids 90 - 140 of CTRP4.
Conjugate	Unconjugated
Tested Applications	ELISA, IF, IHC-P, WB
User Note	Optimal dilutions for each application to be determined by the researcher.
Specificity	These proteins are often highly modified post-translationally and migrate in SDS-PAGE at positions other than their predicted size.

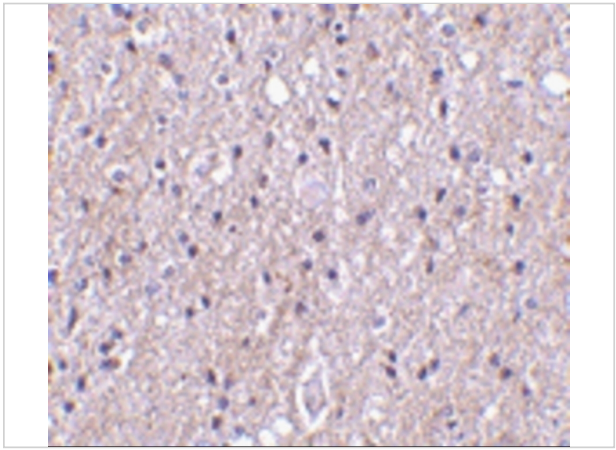
### Properties

Purification	CTRP4 Antibody is affinity chromatography purified via peptide column.
Clonality	Polyclonal
Isotype	IgG
Physical State	Liquid
Buffer	CTRP4 Antibody is supplied in PBS containing 0.02% sodium azide.
Concentration	1 mg/mL
Storage Conditions	CTRP4 antibody can be stored at 4°C for three months and -20°C, stable for up to one year. As with all antibodies care should be taken to avoid repeated freeze thaw cycles. Antibodies should not be exposed to prolonged high temperatures.



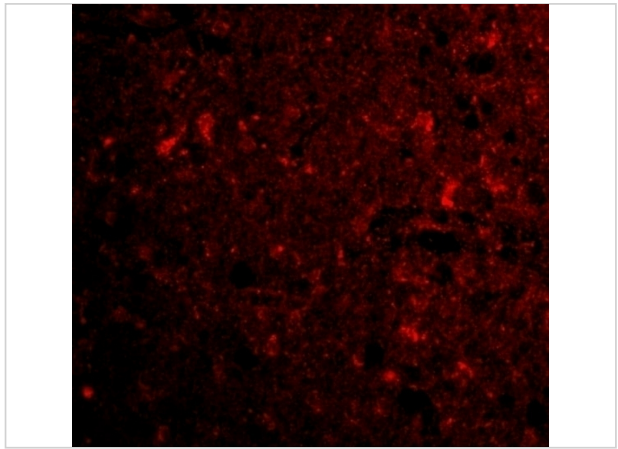
### CTRP4 Antibody 1

Western blot analysis of CTRP4 in rat brain cell lysate with CTRP4 antibody at (A) 1, (B) 2, and (C) 4  $\mu\text{g/mL}$ .



### CTRP4 Antibody 2

Immunohistochemistry of CTRP4 in human brain tissue with CTRP4 antibody at 10  $\mu\text{g/mL}$ .



### CTRP4 Antibody 3

Immunofluorescence of CTRP4 in human brain tissue with CTRP4 antibody at 20  $\mu\text{g/mL}$ .

## Disclaimer

Disclaimer	Optimal dilutions/concentrations should be determined by the end user. The information provided is a guideline for product use. This product is for research use only.
------------	--

For research use only. For additional information, visit ProSci's [Terms and Conditions Page](#).