

NOD2 Antibody

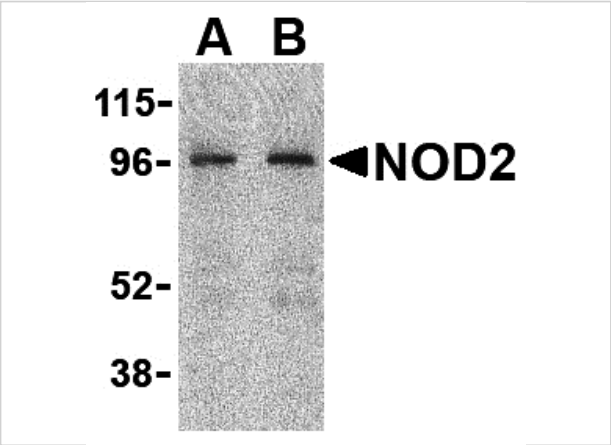
CATALOG NUMBER: 2513

Specifications

Host Species	Rabbit
Species Reactivity	Human
Homology	Predicted species reactivity based on immunogen sequence: Bovine: (77%), Mouse: (77%)
Immunogen	Rabbit NOD2 polyclonal antibody was raised against a synthetic peptide corresponding to 14 amino acids at the carboxy terminus of human NOD2. The immunogen is located within the last 50 amino acids of NOD2.
Conjugate	Unconjugated
Tested Applications	ELISA, ICC, IF, WB
User Note	Optimal dilutions for each application to be determined by the researcher.
Specificity	NOD2 has no cross-reaction with NOD1.
Predicted Molecular Weight	114 kDa

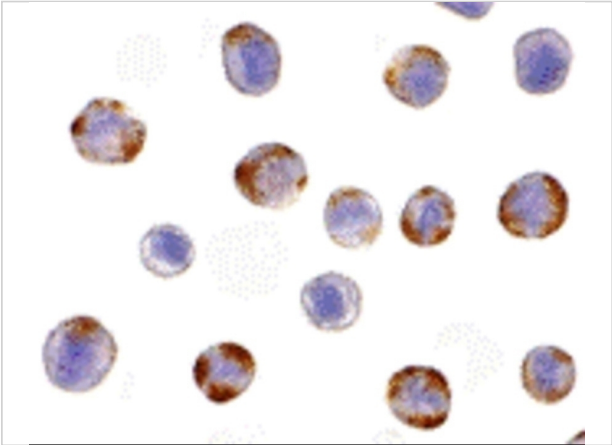
Properties

Purification	NOD2 Antibody is immunoaffinity chromatography purified IgG.
Clonality	Polyclonal
Isotype	IgG
Physical State	Liquid
Buffer	NOD2 Antibody is supplied in PBS containing 0.02% sodium azide.
Concentration	1 mg/mL
Storage Conditions	NOD2 antibody can be stored at 4°C for three months and -20°C, stable for up to one year. As with all antibodies care should be taken to avoid repeated freeze thaw cycles. Antibodies should not be exposed to prolonged high temperatures.



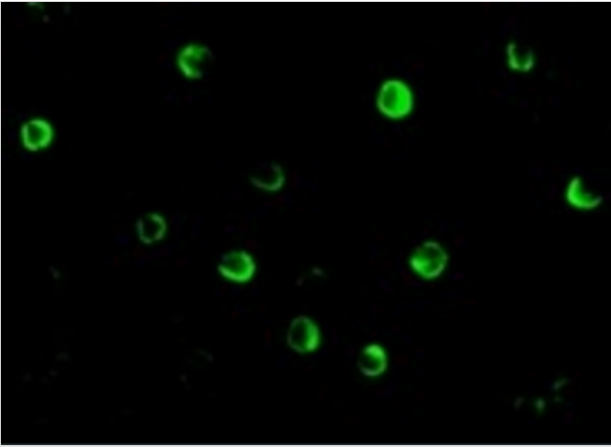
NOD2 Antibody 1

Western blot analysis of NOD2 in HeLa cell lysate with NOD2 antibody at (A) 2 and (B) 4 µg/mL.



NOD2 Antibody 2

Immunocytochemistry of NOD2 in HeLa cells with NOD2 antibody at 10 µg/mL.



NOD2 Antibody 3

Immunofluorescence of NOD2 in HeLa cells with NOD2 antibody at 20 µg/mL.

Disclaimer

Disclaimer	Optimal dilutions/concentrations should be determined by the end user. The information provided is a guideline for product use. This product is for research use only.
------------	--

For research use only. For additional information, visit ProSci's [Terms and Conditions Page](#).