

Caspase-14 Antibody

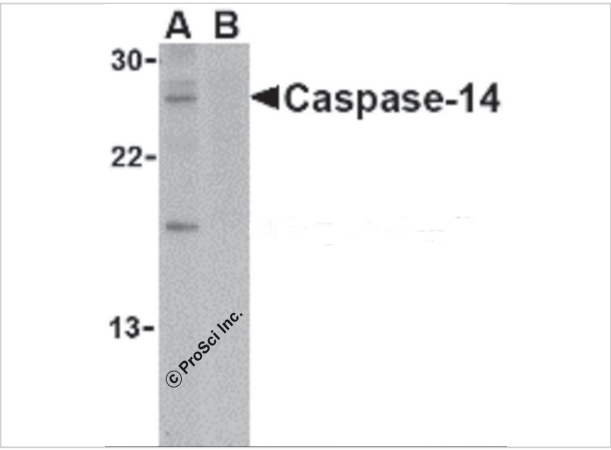
CATALOG NUMBER: 2509

Specifications

Host Species	Rabbit
Species Reactivity	Human, Mouse, Rat
Immunogen	Caspase-14 antibody was raised against a 16 amino acid synthetic peptide from near the carboxy terminus of human caspase-14. The immunogen is located within the last 50 amino acids of Caspase-14.
Conjugate	Unconjugated
Tested Applications	ELISA, IHC-P, WB
User Note	Optimal dilutions for each application to be determined by the researcher.
Predicted Molecular Weight	Predicted: 28 kDa Observed: 27 kDa

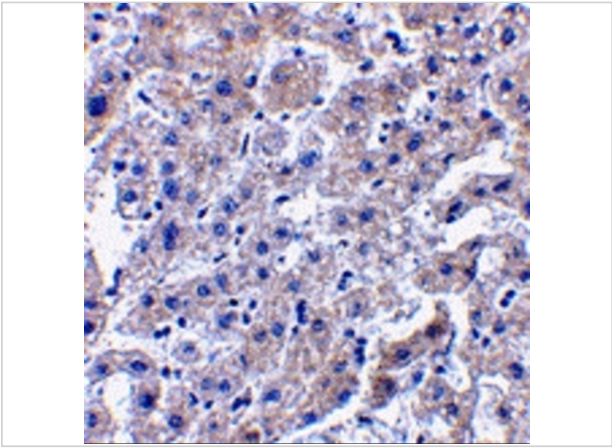
Properties

Purification	Caspase-14 Antibody is affinity chromatography purified via peptide column.
Clonality	Polyclonal
Isotype	IgG
Physical State	Liquid
Buffer	Caspase-14 Antibody is supplied in PBS containing 0.02% sodium azide.
Concentration	1 mg/mL
Storage Conditions	Caspase-14 antibody can be stored at 4°C for three months and -20°C, stable for up to one year. As with all antibodies care should be taken to avoid repeated freeze thaw cycles. Antibodies should not be exposed to prolonged high temperatures.



Caspase-14 Antibody 1

Western blot analysis of caspase-14 in Jurkat cell lysate in the (A) absence or (B) presence of blocking peptide with caspase-14 antibody at 1 µg/mL.



Caspase-14 Antibody 2

Immunohistochemistry of caspase-14 in human liver tissue with caspase-14 antibody at 2.5 µg/mL.

Disclaimer

Disclaimer	Optimal dilutions/concentrations should be determined by the end user. The information provided is a guideline for product use. This product is for research use only.
------------	--

For research use only. For additional information, visit ProSci's [Terms and Conditions Page](#).