

## SARS-CoV Matrix Antibody

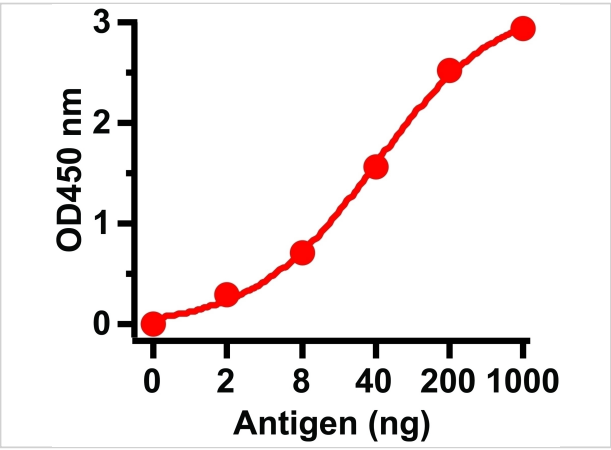
CATALOG NUMBER: 3527

### Specifications

Host Species	Rabbit
Species Reactivity	Virus
Homology	Predicted reactivity based on immunogen sequence: SARS-CoV-2 Matrix protein: (identity 77%, homology 93%)
Immunogen	Anti-SARS-CoV Matrix antibody ( <b>3527</b> ) was raised against a peptide corresponding to 13 amino acids near the amino-terminus of SARS-CoV Matrix protein. The immunogen is located within the first 50 amino acids of SARS-CoV Matrix.
Conjugate	Unconjugated
Tested Applications	ELISA
User Note	Optimal dilutions for each application to be determined by the researcher.

### Properties

Purification	SARS-CoV Matrix Antibody is affinity chromatography purified via peptide column.
Clonality	Polyclonal
Isotype	IgG
Physical State	Liquid
Buffer	SARS-CoV Matrix Antibody is supplied in PBS containing 0.02% sodium azide.
Concentration	1 mg/mL
Storage Conditions	SARS-CoV Matrix antibody can be stored at 4°C for three months and -20°C, stable for up to one year. As with all antibodies care should be taken to avoid repeated freeze thaw cycles. Antibodies should not be exposed to prolonged high temperatures.



SARS-CoV Matrix Antibody 1

**Figure 1 ELISA Test**  
Antibodies: SARS-CoV Matrix Antibody, 3527 (1 µg/mL). A direct ELISA was performed using immunogen as coating antigen and the anti-SARS-CoV Matrix antibody...

Disclaimer

Disclaimer	Optimal dilutions/concentrations should be determined by the end user. The information provided is a guideline for product use. This product is for research use only.
------------	--

For research use only. For additional information, visit ProSci's [Terms and Conditions Page](#).