

IRS-1 Antibody

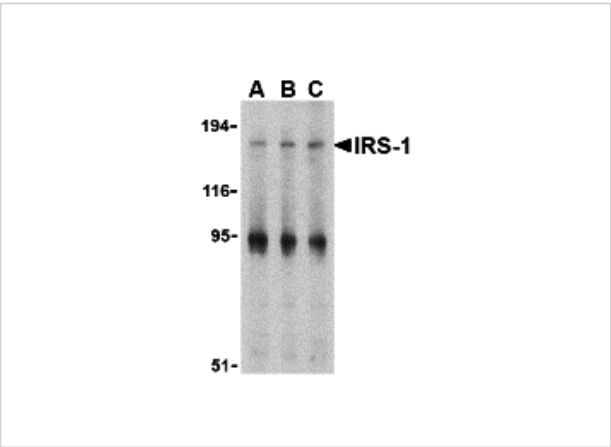
CATALOG NUMBER: 3521

Specifications

Host Species	Rabbit
Species Reactivity	Human, Mouse
Homology	Predicted species reactivity based on immunogen sequence: Rat: (80%)
Immunogen	IRS-1 antibody was raised against a 16 amino acid synthetic peptide from near the center of human IRS-1. The immunogen is located within amino acids 910 - 960 of IRS-1.
Conjugate	Unconjugated
Tested Applications	ELISA, ICC, IF, WB
User Note	Optimal dilutions for each application to be determined by the researcher.

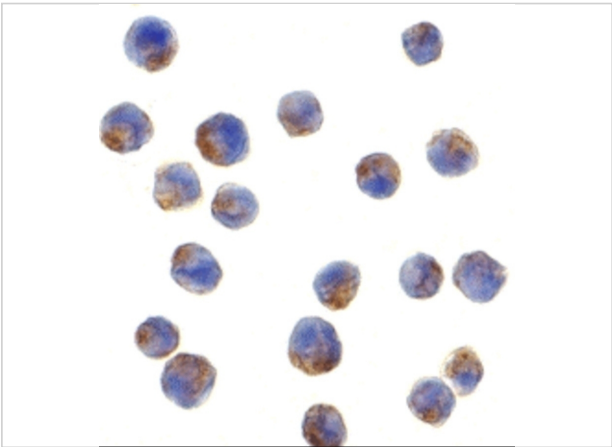
Properties

Purification	IRS-1 Antibody is affinity chromatography purified via peptide column.
Clonality	Polyclonal
Isotype	IgG
Physical State	Liquid
Buffer	IRS-1 Antibody is supplied in PBS containing 0.02% sodium azide.
Concentration	1 mg/mL
Storage Conditions	IRS-1 antibody can be stored at 4°C for three months and -20°C, stable for up to one year. As with all antibodies care should be taken to avoid repeated freeze thaw cycles. Antibodies should not be exposed to prolonged high temperatures.



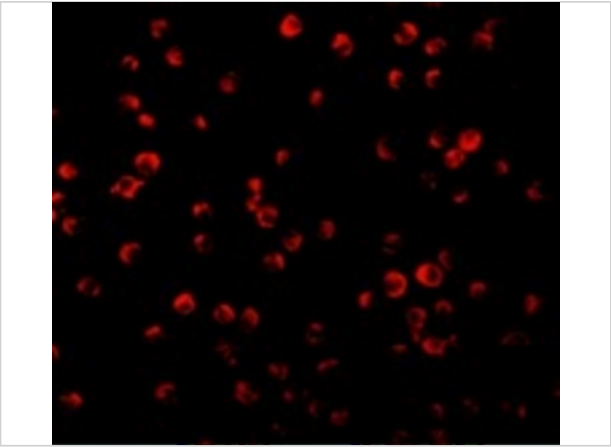
IRS-1 Antibody 1

Western blot analysis of IRS-1 in PC-3 cell lysate with IRS-1 antibody at (A) 1, (B) 2 and (C) 4 $\mu\text{g/mL}$.



IRS-1 Antibody 2

Immunocytochemistry of IRS-1 in P815 cells with IRS-1 antibody at 2 $\mu\text{g/mL}$.



IRS-1 Antibody 3

Immunofluorescence of IRS-1 in P815 cells with IRS-1 antibody at 2 $\mu\text{g/mL}$.

Disclaimer

Disclaimer	Optimal dilutions/concentrations should be determined by the end user. The information provided is a guideline for product use. This product is for research use only.
------------	--

For research use only. For additional information, visit ProSci's [Terms and Conditions Page](#).