

## PTEN Antibody

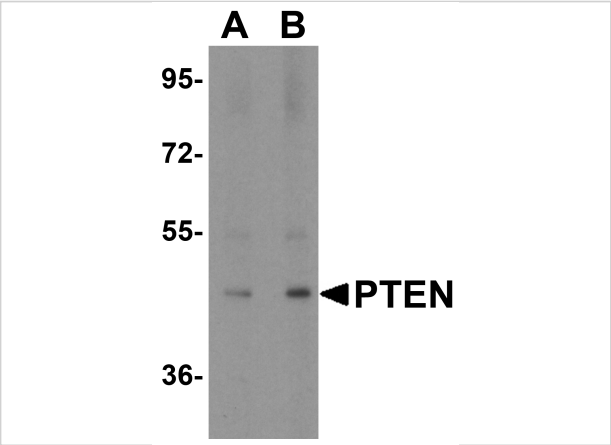
CATALOG NUMBER: 3517

### Specifications

|                            |   |
|----------------------------|---|
| Host Species               | Rabbit  |
| Species Reactivity         | Human, Mouse  |
| Immunogen                  | PTEN antibody was raised against a 15 amino acid synthetic peptide from near the amino terminus of human PTEN.<br>The immunogen is located within the first 50 amino acids of PTEN. |
| Conjugate                  | Unconjugated  |
| Tested Applications        | ELISA, IF, IP, WB   |
| User Note                  | Optimal dilutions for each application to be determined by the researcher.  |
| Predicted Molecular Weight | Predicted: 44, 63 kDa<br>Observed: 46 kDa   |

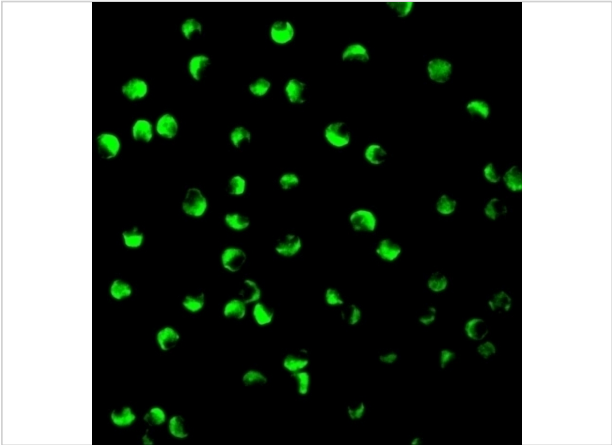
### Properties

|                    |  |
|--------------------|--|
| Purification       | PTEN Antibody is affinity chromatography purified via peptide column.  |
| Clonality          | Polyclonal   |
| Isotype            | IgG  |
| Physical State     | Liquid   |
| Buffer             | PTEN Antibody is supplied in PBS containing 0.02% sodium azide.  |
| Concentration      | 1 mg/mL  |
| Storage Conditions | PTEN antibody can be stored at 4°C for three months and -20°C, stable for up to one year.<br>As with all antibodies care should be taken to avoid repeated freeze thaw cycles.<br>Antibodies should not be exposed to prolonged high temperatures. |



PTEN Antibody 1

Western blot analysis of PTEN in human brain tissue lysate with PTEN antibody at (A) 1 and (B) 2 µg/mL.



PTEN Antibody 2

Immunofluorescence of PTEN in P815 cells with PTEN antibody at 2 µg/mL.

Disclaimer

|            |  |
|------------|--|
| Disclaimer | Optimal dilutions/concentrations should be determined by the end user. The information provided is a guideline for product use. This product is for research use only. |
|------------|--|

For research use only. For additional information, visit ProSci's [Terms and Conditions Page](#).