

PTEN Antibody

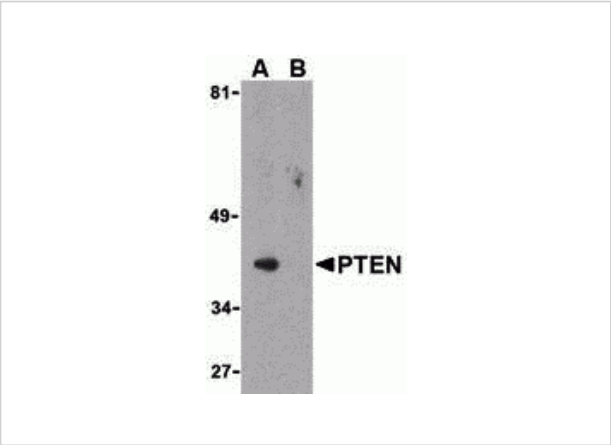
CATALOG NUMBER: 3515

Specifications

| | |
|---------------------|--|
| Host Species | Rabbit |
| Species Reactivity | Human, Mouse |
| Immunogen | PTEN antibody was raised against a 16 amino acid synthetic peptide from near the carboxy terminus of human PTEN. The immunogen is located within the last 50 amino acids of PTEN. |
| Conjugate | Unconjugated |
| Tested Applications | ELISA, IP, WB |
| User Note | Optimal dilutions for each application to be determined by the researcher. |

Properties

| | |
|--------------------|--|
| Purification | PTEN Antibody is affinity chromatography purified via peptide column. |
| Clonality | Polyclonal |
| Isotype | IgG |
| Physical State | Liquid |
| Buffer | PTEN Antibody is supplied in PBS containing 0.02% sodium azide. |
| Concentration | 1 mg/mL |
| Storage Conditions | PTEN antibody can be stored at 4°C for three months and -20°C, stable for up to one year. As with all antibodies care should be taken to avoid repeated freeze thaw cycles. Antibodies should not be exposed to prolonged high temperatures. |



PTEN Antibody 1

Western blot analysis of PTEN in PC-3 cell lysate with PTEN antibody at 1 µg/mL in either the (A) absence or (B) presence of blocking peptide.

Disclaimer

| | |
|------------|--|
| Disclaimer | Optimal dilutions/concentrations should be determined by the end user. The information provided is a guideline for product use. This product is for research use only. |
|------------|--|

For research use only. For additional information, visit ProSci's [Terms and Conditions Page](#).