

4E-BP1 Antibody

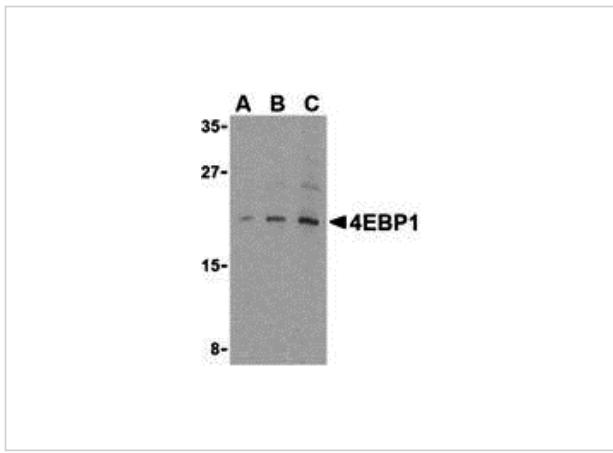
CATALOG NUMBER: 3513

Specifications

Host Species	Rabbit
Species Reactivity	Human, Mouse
Homology	Predicted species reactivity based on immunogen sequence: Rat: (100%), Bovine: (92%)
Immunogen	4E-BP1 antibody was raised against a 14 amino acid synthetic peptide from near the carboxy terminus of human 4E-BP1. The immunogen is located within the last 50 amino acids of 4E-BP1.
Conjugate	Unconjugated
Tested Applications	ELISA, ICC, IF, WB
User Note	Optimal dilutions for each application to be determined by the researcher.

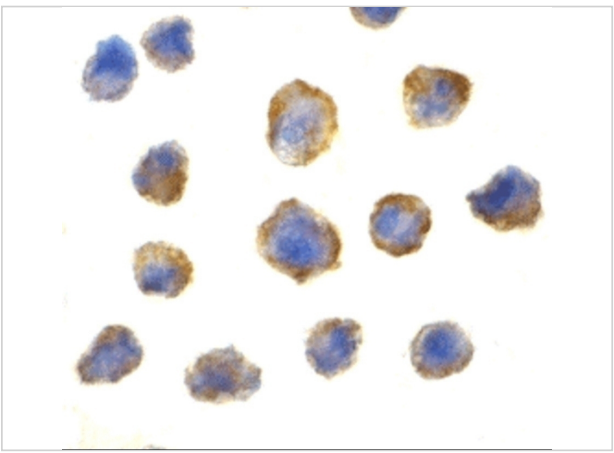
Properties

Purification	4E-BP1 Antibody is affinity chromatography purified via peptide column.
Clonality	Polyclonal
Isotype	IgG
Physical State	Liquid
Buffer	4E-BP1 Antibody is supplied in PBS containing 0.02% sodium azide.
Concentration	1 mg/mL
Storage Conditions	4E-BP1 antibody can be stored at 4°C for three months and -20°C, stable for up to one year. As with all antibodies care should be taken to avoid repeated freeze thaw cycles. Antibodies should not be exposed to prolonged high temperatures.



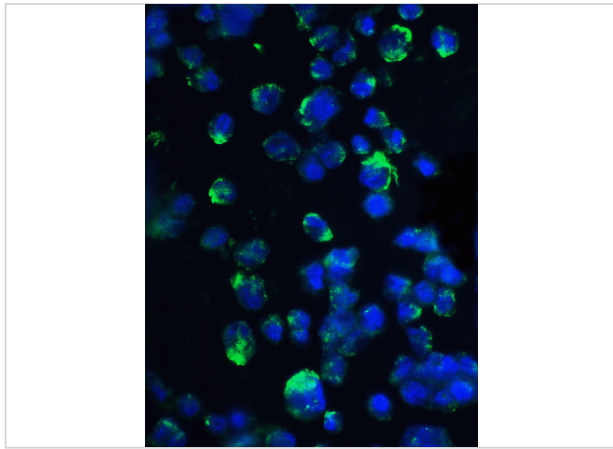
4E-BP1 Antibody 1

Western blot analysis of 4E-BP1 in 3T3 cell lysate with 4E-BP1 antibody at (A) 2.5, (B) 5 and (C) 10 µg/mL.



4E-BP1 Antibody 2

Immunocytochemistry of 4E-BP1 in 3T3 cells with 4E-BP1 antibody at 2 µg/mL.



4E-BP1 Antibody 3

Immunofluorescence of 4E-BP1 in 3T3 cells with 4E-BP1 antibody at 20 µg/mL.

Green: 4E-BP1 Antibody (3513)
Blue: DAPI staining

Disclaimer

Disclaimer	Optimal dilutions/concentrations should be determined by the end user. The information provided is a guideline for product use. This product is for research use only.
------------	--

For research use only. For additional information, visit ProSci's [Terms and Conditions Page](#).