

## RPS6K1 Antibody

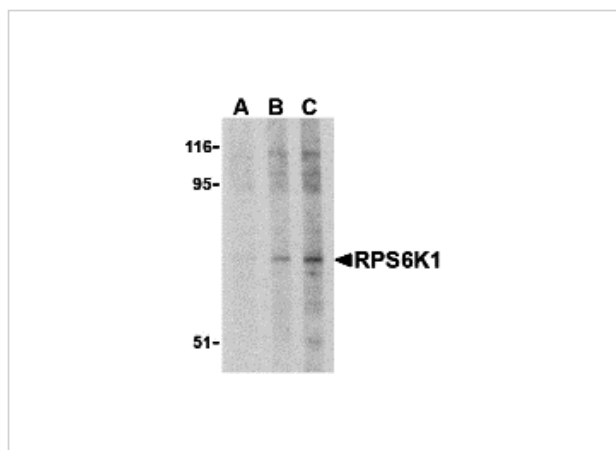
CATALOG NUMBER: 3511

### Specifications

Host Species	Rabbit
Species Reactivity	Human
Homology	Predicted species reactivity based on immunogen sequence: Rat: (100%), Chicken: (100%), Mouse: (100%)
Immunogen	RPS6K1 antibody was raised against a 16 amino acid synthetic peptide from near the carboxy terminus of human RPS6K1. The immunogen is located within amino acids 600 - 650 of RPS6K1.
Conjugate	Unconjugated
Tested Applications	ELISA, ICC, IF, WB
User Note	Optimal dilutions for each application to be determined by the researcher.

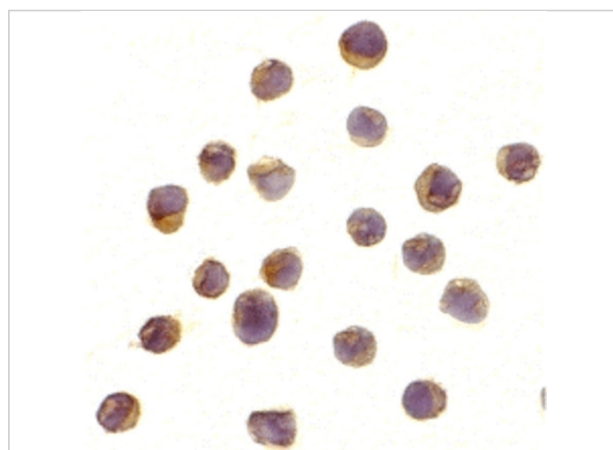
### Properties

Purification	RPS6K1 Antibody is affinity chromatography purified via peptide column.
Clonality	Polyclonal
Isotype	IgG
Physical State	Liquid
Buffer	RPS6K1 Antibody is supplied in PBS containing 0.02% sodium azide.
Concentration	1 mg/mL
Storage Conditions	RPS6K1 antibody can be stored at 4°C for three months and -20°C, stable for up to one year. As with all antibodies care should be taken to avoid repeated freeze thaw cycles. Antibodies should not be exposed to prolonged high temperatures.



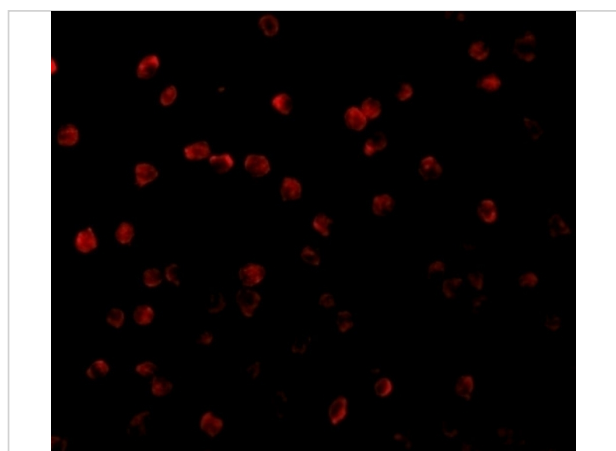
### RPS6K1 Antibody 1

Western blot analysis of RPS6K1 in Jurkat cell lysate with RPS6K1 antibody at (A) 2.5, (B) 5 and (C) 10  $\mu\text{g/mL}$ .



### RPS6K1 Antibody 2

Immunocytochemistry of RPS6K1 in Jurkat cells with RPS6K1 antibody at 10  $\mu\text{g/mL}$ .



### RPS6K1 Antibody 3

Immunofluorescence of RPS6 Kinase in Jurkat cells with RPS6 Kinase antibody at 20  $\mu\text{g/mL}$ .

## Disclaimer

#### Disclaimer

Optimal dilutions/concentrations should be determined by the end user. The information provided is a guideline for product use. This product is for research use only.

For research use only. For additional information, visit ProSci's [Terms and Conditions Page](#).