

TSC2 Antibody

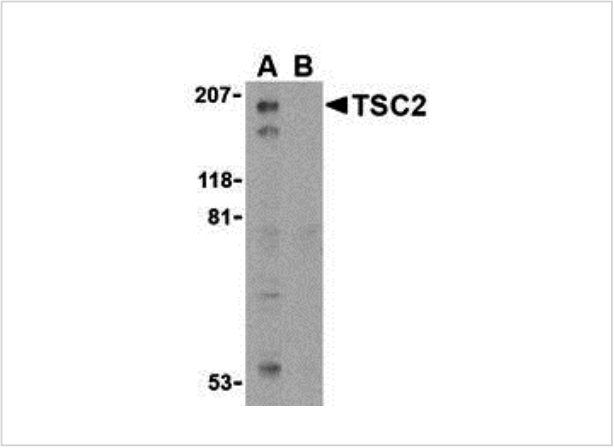
CATALOG NUMBER: 3507

Specifications

Host Species	Rabbit
Species Reactivity	Human, Mouse
Homology	Predicted species reactivity based on immunogen sequence: Rat: (86%)
Immunogen	TSC2 antibody was raised against a 15 amino acid synthetic peptide from near the carboxy terminus of human TSC2. The immunogen is located within amino acids 1450 - 1500 of TSC2.
Conjugate	Unconjugated
Tested Applications	ELISA, WB
User Note	Optimal dilutions for each application to be determined by the researcher.
Predicted Molecular Weight	Predicted: 200 kDa Observed: 200 kDa

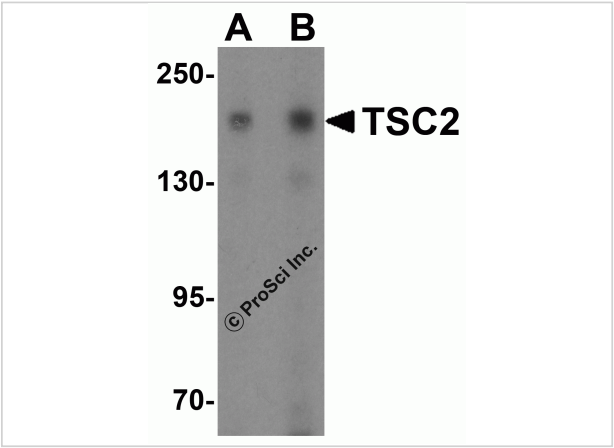
Properties

Purification	TSC2 Antibody is affinity chromatography purified via peptide column.
Clonality	Polyclonal
Isotype	IgG
Physical State	Liquid
Buffer	TSC2 Antibody is supplied in PBS containing 0.02% sodium azide.
Concentration	1 mg/mL
Storage Conditions	TSC2 antibody can be stored at 4°C for three months and -20°C, stable for up to one year. As with all antibodies care should be taken to avoid repeated freeze thaw cycles. Antibodies should not be exposed to prolonged high temperatures.



TSC2 Antibody 1

Western blot analysis of TSC2 in L1210 cell lysate with TSC2 antibody at 1 µg/mL in the (A) absence and (B) presence of blocking peptide.



TSC2 Antibody 2

Western blot analysis of TSC2 in Jurkat cell lysate with TSC2 antibody at (A) 1 and (B) 2 µg/mL..

Disclaimer

Disclaimer	Optimal dilutions/concentrations should be determined by the end user. The information provided is a guideline for product use. This product is for research use only.
------------	--

For research use only. For additional information, visit ProSci's [Terms and Conditions Page](#).