

## Rheb Antibody

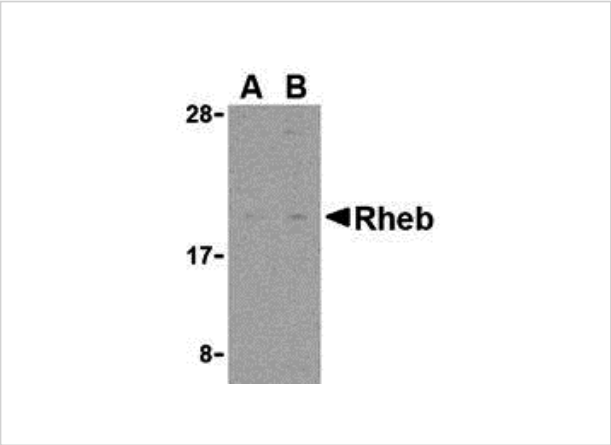
CATALOG NUMBER: 3499

### Specifications

Host Species	Rabbit
Species Reactivity	Human, Mouse, Rat
Homology	Predicted species reactivity based on immunogen sequence: Bovine: (100%)
Immunogen	Rabbit Rheb polyclonal antibody was raised against a 14 amino acid synthetic peptide from the amino terminus of human Rheb. The immunogen is located within the first 50 amino acids of Rheb.
Conjugate	Unconjugated
Tested Applications	ELISA, WB
User Note	Optimal dilutions for each application to be determined by the researcher.
Specificity	Post-translationally modified Rheb is sometimes observed at higher molecular weight.

### Properties

Purification	Rheb Antibody is affinity chromatography purified via peptide column.
Clonality	Polyclonal
Isotype	IgG
Physical State	Liquid
Buffer	Rheb Antibody is supplied in PBS containing 0.02% sodium azide.
Concentration	1 mg/mL
Storage Conditions	Rheb antibody can be stored at 4°C for three months and -20°C, stable for up to one year. As with all antibodies care should be taken to avoid repeated freeze thaw cycles. Antibodies should not be exposed to prolonged high temperatures.



### Rheb Antibody 1

Western blot analysis of Rheb in rat heart cell lysate with Rheb antibody at (A) 2 and (B) 4  $\mu\text{g/mL}$ .

### Disclaimer

Disclaimer	Optimal dilutions/concentrations should be determined by the end user. The information provided is a guideline for product use. This product is for research use only.
------------	--

For research use only. For additional information, visit ProSci's [Terms and Conditions Page](#).