

## TOR Antibody

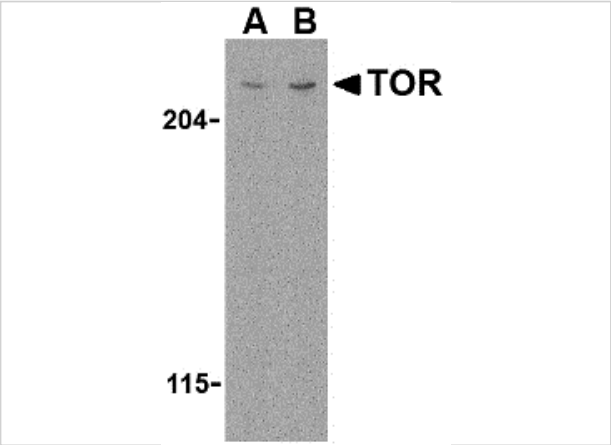
CATALOG NUMBER: 3485

### Specifications

|                     |   |
|---------------------|---|
| Host Species        | Rabbit  |
| Species Reactivity  | Human, Mouse  |
| Homology            | Predicted species reactivity based on immunogen sequence: Rat: (100%)   |
| Immunogen           | TOR antibody was raised against a 15 amino acid synthetic peptide from near the amino terminus of human TOR.<br>The immunogen is located within amino acids 210 - 260 of TOR. |
| Conjugate           | Unconjugated  |
| Tested Applications | ELISA, ICC, WB  |
| User Note           | Optimal dilutions for each application to be determined by the researcher.  |

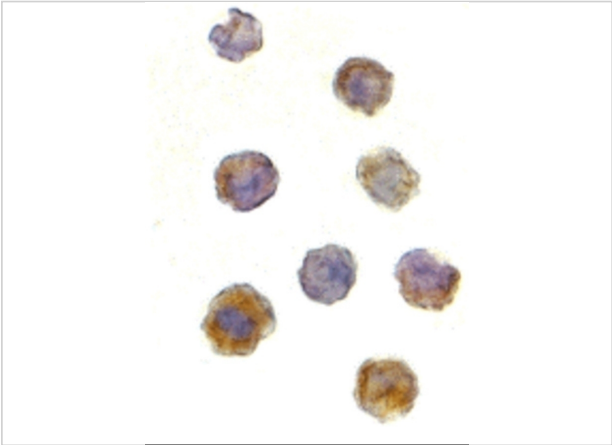
### Properties

|                    |   |
|--------------------|---|
| Purification       | TOR Antibody is affinity chromatography purified via peptide column.  |
| Clonality          | Polyclonal  |
| Isotype            | IgG   |
| Physical State     | Liquid  |
| Buffer             | TOR Antibody is supplied in PBS containing 0.02% sodium azide.  |
| Concentration      | 1 mg/mL   |
| Storage Conditions | TOR antibody can be stored at 4°C for three months and -20°C, stable for up to one year. As with all antibodies care should be taken to avoid repeated freeze thaw cycles. Antibodies should not be exposed to prolonged high temperatures. |



TOR Antibody 1

Western blot analysis of TOR in L1210 cell lysate with TOR antibody at (A) 1 and (B) 2 µg/mL.



TOR Antibody 2

Immunocytochemistry of TOR in L1210 cells with TOR antibody at 2 µg/mL.

Disclaimer

|            |  |
|------------|--|
| Disclaimer | Optimal dilutions/concentrations should be determined by the end user. The information provided is a guideline for product use. This product is for research use only. |
|------------|--|

For research use only. For additional information, visit ProSci's [Terms and Conditions Page](#).