

Caspase-6 Antibody

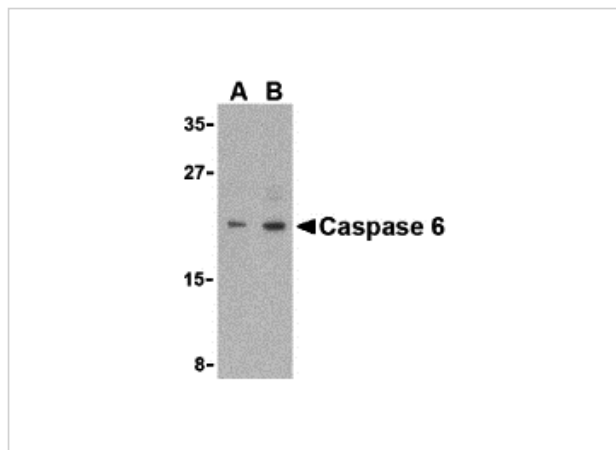
CATALOG NUMBER: 3469

Specifications

Host Species	Rabbit
Species Reactivity	Human
Immunogen	Caspase-6 antibody was raised against a 15 amino acid synthetic peptide from near the center of human Caspase-6. The immunogen is located within amino acids 160 - 210 of Caspase-6.
Conjugate	Unconjugated
Tested Applications	ELISA, ICC, IF, WB
User Note	Optimal dilutions for each application to be determined by the researcher.
Specificity	Depending on cell lines or tissues used, either full-length or other cleavage products may be observed.

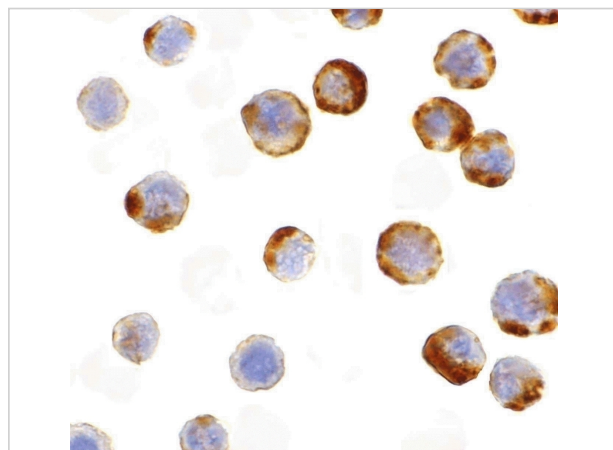
Properties

Purification	Caspase-6 Antibody is immunoaffinity purified .
Clonality	Polyclonal
Isotype	IgG
Physical State	Liquid
Buffer	Caspase-6 Antibody is supplied in PBS containing 0.02% sodium azide.
Concentration	1 mg/mL
Storage Conditions	Caspase-6 antibody can be stored at 4°C for three months and -20°C, stable for up to one year. As with all antibodies care should be taken to avoid repeated freeze thaw cycles. Antibodies should not be exposed to prolonged high temperatures.



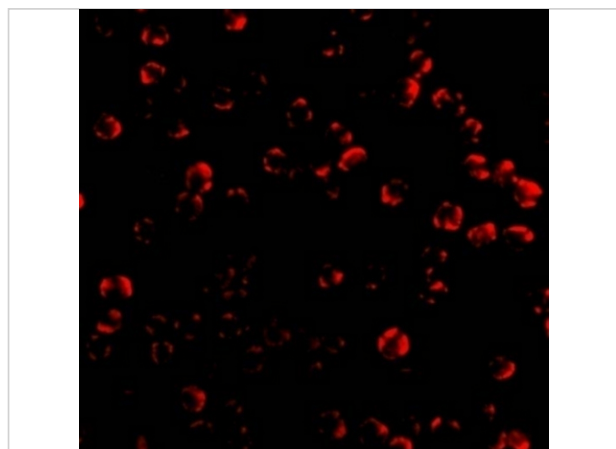
Caspase-6 Antibody 1

Western blot analysis of Caspase-6 in MCF7 cell lysate with Caspase-6 antibody (IN) at (A) 1 and (B) 2 $\mu\text{g/mL}$.



Caspase-6 Antibody 2

Immunocytochemistry of caspase-6 in MCF7 with caspase-6 antibody at 1 $\mu\text{g/mL}$.



Caspase-6 Antibody 3

Immunofluorescence of Caspase 6 in MCF7 cells with Caspase 6 antibody at 10 $\mu\text{g/mL}$.

Disclaimer

Disclaimer

Optimal dilutions/concentrations should be determined by the end user. The information provided is a guideline for product use. This product is for research use only.

For research use only. For additional information, visit ProSci's [Terms and Conditions Page](#).