

## Caspase-7 Antibody

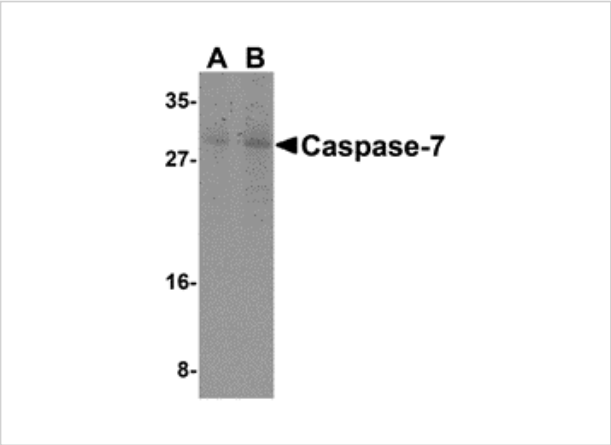
CATALOG NUMBER: 3467

### Specifications

|                     |   |
|---------------------|---|
| Host Species        | Rabbit  |
| Species Reactivity  | Human, Mouse, Rat   |
| Immunogen           | Caspase-7 antibody was raised against a 16 amino acid synthetic peptide from near the amino-terminus of human Caspase-7.<br>The immunogen is located within amino acids 30 - 80 of Caspase-7. |
| Conjugate           | Unconjugated  |
| Tested Applications | ELISA, IHC-P, WB  |
| User Note           | Optimal dilutions for each application to be determined by the researcher.  |
| Specificity         | Depending on cell lines or tissues used, other cleavage products may be observed.   |

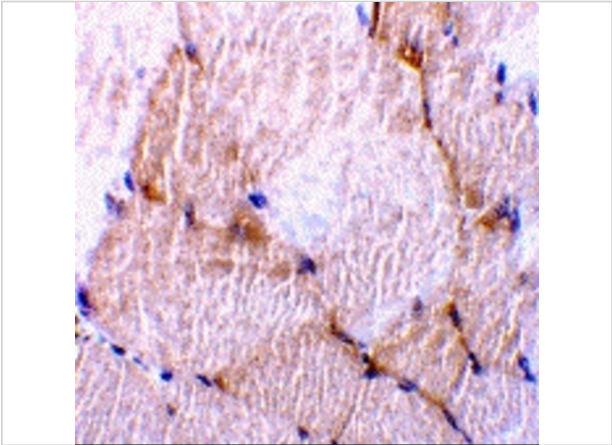
### Properties

|                    |   |
|--------------------|---|
| Purification       | Caspase-7 Antibody is affinity chromatography purified via peptide column.  |
| Clonality          | Polyclonal  |
| Isotype            | IgG   |
| Physical State     | Liquid  |
| Buffer             | Caspase-7 Antibody is supplied in PBS containing 0.02% sodium azide.  |
| Concentration      | 1 mg/mL   |
| Storage Conditions | Caspase-7 antibody can be stored at 4°C for three months and -20°C, stable for up to one year. As with all antibodies care should be taken to avoid repeated freeze thaw cycles. Antibodies should not be exposed to prolonged high temperatures. |



Caspase-7 Antibody 1

Western blot analysis of Caspase-7 in mouse skeletal muscle cell lysate with Caspase-7 antibody at (A) 0.5 and (B) 1  $\mu\text{g/mL}$ .



Caspase-7 Antibody 2

Immunohistochemistry of caspase-7 in rat skeletal muscle tissue with caspase-7 antibody at 10  $\mu\text{g/mL}$ .

Disclaimer

|            |  |
|------------|--|
| Disclaimer | Optimal dilutions/concentrations should be determined by the end user. The information provided is a guideline for product use. This product is for research use only. |
|------------|--|

For research use only. For additional information, visit ProSci's [Terms and Conditions Page](#).