

## Caspase-1 Antibody

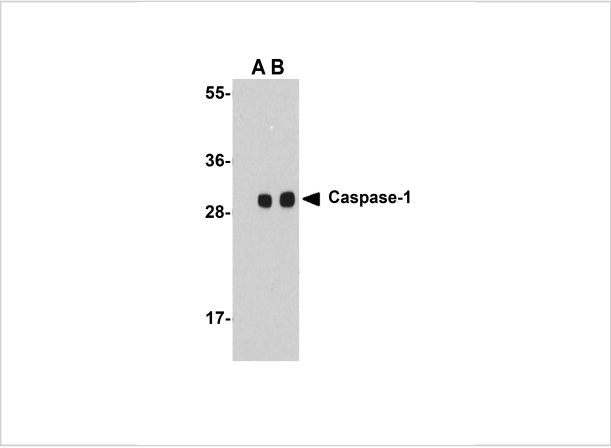
CATALOG NUMBER: 3459

### Specifications

Host Species	Rabbit
Species Reactivity	Human
Homology	Predicted species reactivity based on immunogen sequence: Rat: (88%), Pig: (81%), Horse: (81%)
Immunogen	Caspase-1 antibody was raised against a 16 amino acid synthetic peptide from near the carboxy terminus of human Caspase-1. The immunogen is located within the last 50 amino acids of Caspase-1.
Conjugate	Unconjugated
Tested Applications	ELISA, IHC-P, WB
User Note	Optimal dilutions for each application to be determined by the researcher.
Specificity	Depending on cell lines or tissues used, other cleavage products may be observed.

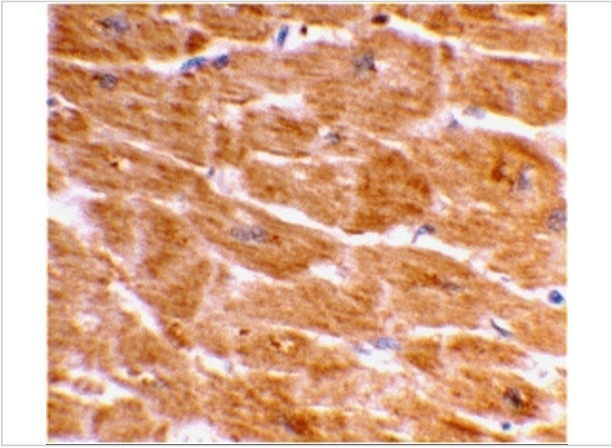
### Properties

Purification	Caspase-1 Antibody is affinity chromatography purified via peptide column.
Clonality	Polyclonal
Isotype	IgG
Physical State	Liquid
Buffer	Caspase-1 Antibody is supplied in PBS containing 0.02% sodium azide.
Concentration	1 mg/mL
Storage Conditions	Caspase-1 antibody can be stored at 4°C up to one year. Antibodies should not be exposed to prolonged high temperatures.



### Caspase-1 Antibody 1

Western blot analysis of Caspase-1 in human heart cell lysate with Caspase-1 antibody at (A) 1 and (B) 2  $\mu\text{g/mL}$ .



### Caspase-1 Antibody 2

Immunohistochemical staining of human heart tissue using Caspase-1 antibody at 2  $\mu\text{g/mL}$ .

## Disclaimer

Disclaimer	Optimal dilutions/concentrations should be determined by the end user. The information provided is a guideline for product use. This product is for research use only.
------------	--

For research use only. For additional information, visit ProSci's [Terms and Conditions Page](#).