

Caspase-4 Antibody

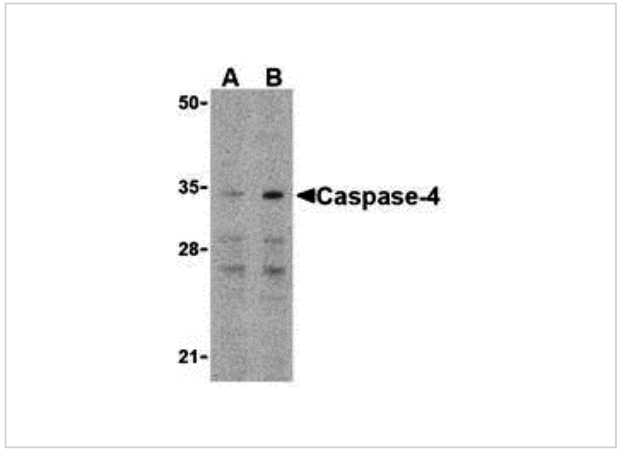
CATALOG NUMBER: 3451

Specifications

Host Species	Rabbit
Species Reactivity	Human, Mouse
Immunogen	Caspase-4 antibody was raised against a 16 amino acid synthetic peptide from the amino-terminus of human Caspase-4. The immunogen is located within amino acids 20 - 70 of Caspase-4.
Conjugate	Unconjugated
Tested Applications	ELISA, IF, IHC-P, WB
User Note	Optimal dilutions for each application to be determined by the researcher.
Specificity	Depending on cell lines or tissues used, other cleavage products may be observed.

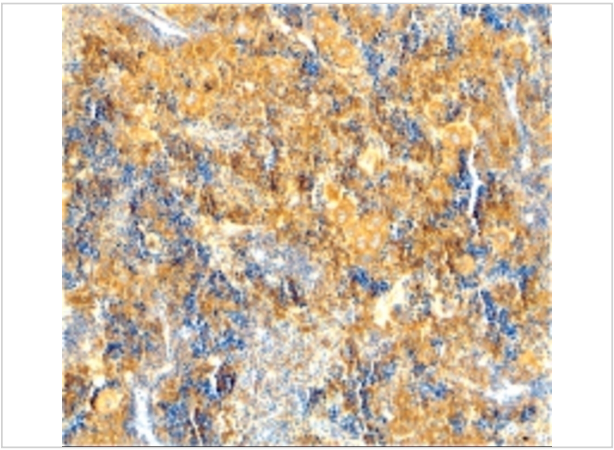
Properties

Purification	Caspase-4 Antibody is affinity chromatography purified via peptide column.
Clonality	Polyclonal
Isotype	IgG
Physical State	Liquid
Buffer	Caspase-4 Antibody is supplied in PBS containing 0.02% sodium azide.
Concentration	1 mg/mL
Storage Conditions	Caspase-4 antibody can be stored at 4°C for three months and -20°C, stable for up to one year. As with all antibodies care should be taken to avoid repeated freeze thaw cycles. Antibodies should not be exposed to prolonged high temperatures.



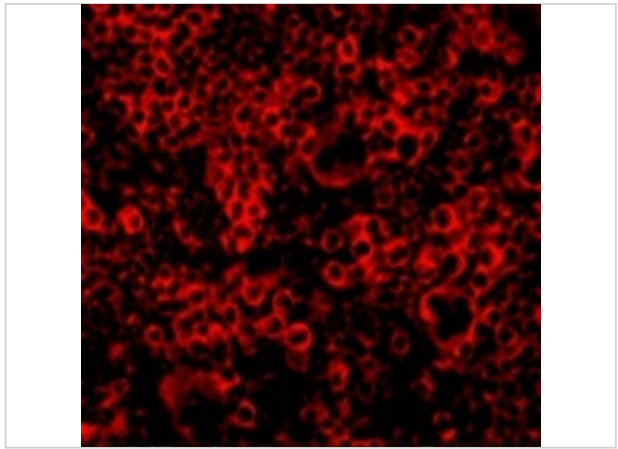
Caspase-4 Antibody 1

Western blot analysis of caspase-4 in Ramos cells with caspase-4 antibody at (A) 0.5 and (B) 1 $\mu\text{g/mL}$.



Caspase-4 Antibody 2

Immunohistochemical staining of mouse spleen using caspase-4 antibody at 2 $\mu\text{g/mL}$.



Caspase-4 Antibody 3

Immunofluorescence of Caspase-4 in Mouse Spleen 100 cells with Caspase-4 antibody at $\mu\text{g/mL}$.

Disclaimer

Disclaimer	Optimal dilutions/concentrations should be determined by the end user. The information provided is a guideline for product use. This product is for research use only.
------------	--

For research use only. For additional information, visit ProSci's [Terms and Conditions Page](#).